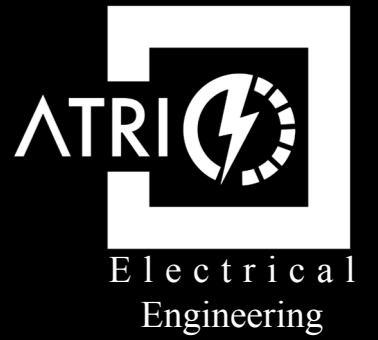
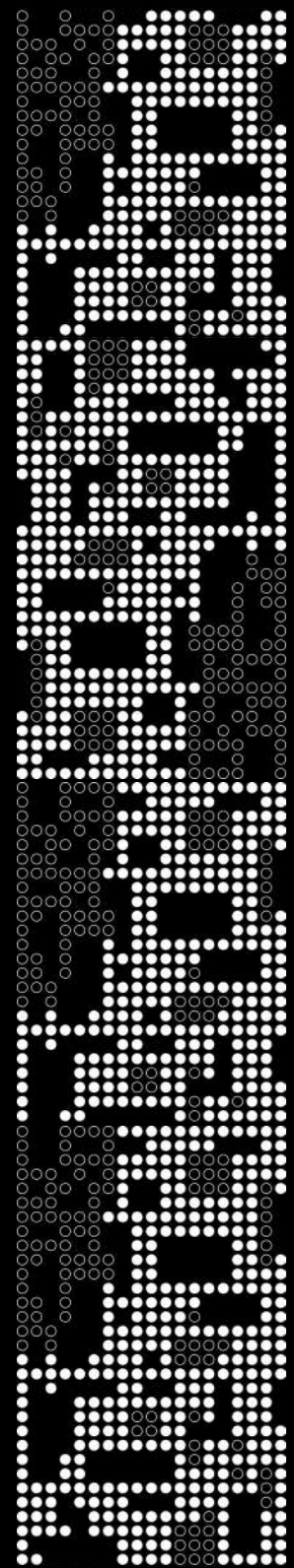


ATRIO

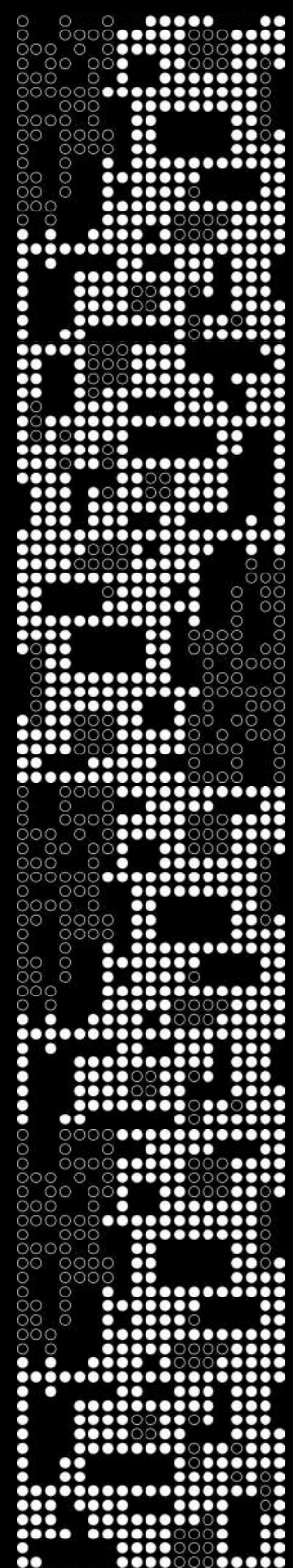
M I L A N O





# Index

<b>Atrio Overview .....</b>	<b>3</b>
<b>Atrio Services .....</b>	<b>5</b>
<b>Projects Locations .....</b>	<b>7</b>
<b>Masterplan Development .....</b>	<b>9</b>
<b>Architecture .....</b>	<b>43</b>
<b>Interior Design .....</b>	<b>69</b>
<b>Data Centers .....</b>	<b>93</b>



## Atrio Overview

### **ATRIO:**

ATRIO is an Italian Entity for Architectural, Engineering Consultancy Services.

ATRIO has been established as a design hub of Multi-Scale Projects in the fields of Architecture, Landscape, Urban planning, Building services, Structure Design, Project Management.

Our Head Office is located in Milano, Italy where our Middle East Existence comes through Cairo office and Dubai Branch is yet to open this year.

### **Our Vision:**

ATRIO is approaching to be the brand that indicates innovation, eliteness and credibility for our partners in success all across the globe.

### **Our mission:**

is to deliver happiness and comfort to our partners. This takes action through our work that relies on solid educational research asset, which guides us to enhance our users' lifestyle quality. And based on that, we adapt the up to date engineering technologies and techniques to approach a safe secured sustainable world.

### **Our Values:**

In our team we work with integrity, respect and passion, believing in continues learning, and teamwork that can add new values to our believers such as happiness, social integration and improving people's way of living.

### **Partners:**

We collaborate with companies and professional firms for the development of specific projects in different scales, making use of the contribution of experts and scholars to form analysis groups on particularly complex topics.

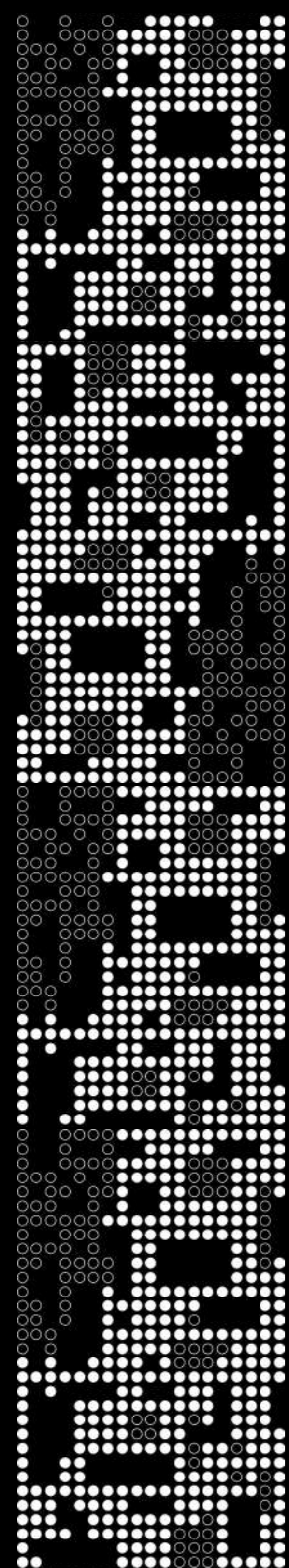
The distinctive feature of any project is the modality of the elaboration, privileging the teamwork, which integrates the specific competences in a collective professional philosophy, able to better understand the whole development of each single project.

### **Membership:**

ATRIO team has memberships in different international professional and academic entities such as:

- (ACUUS) Associated research Centers for the Urban Underground Space.
- Politecnico di Milano AI.
- Uptime Institute.
- BICSI.





## Atrio Services

### Customer Strategic Business:

Our approach to the requirements of the client's strategic business is based on our complete understanding of all factors affecting their needs. This takes place by identifying their impact, analysing, surveying strategies and modeling various possible scenarios. The comprehensive approach allows us to deliver innovative solutions that can enhance the intervention along with the surrounding context.

- Briefing.
- Site analysis.
- Estate Plan.
- Feasibility studies.
- Research and development.
- Engineering Design.
- Contract Documents.
- Project Management.

### Design and Consultancy:

Atrio's target is to seek for the achievement of the best results that can provide functionality, beauty and comfort. We aim to meet the client's objectives through our design proposals and consultancy services.

- Architecture and Interior design and consultancy.
- Urban and Landscape design and consultancy.
- Building Services Design.
- MEP design.
- Structural design.
- Infrastructural design.
- Specialist in Data Center infrastructure Design (Accredited Tier Designer).
- Security systems design.
- Industrial design consultancy.
- Lighting design.
- Acoustic Consultancy.
- Value Engineering.

### Technical Services:

Atrio does care about the design production quality. This is why we use the best techniques to assure clearance with our clients, contractors and consultants. This is the reason behind our updated with the new techniques and software.

- BIM (Building Information Modelling).
- Digital Solutions.

### Projects Management:

Atrio's expertise in the construction stage of projects have the ability of controlling the cost, time and quality. Our staff coordinate each stage of work from Pre-construction to the actual phase of building then closeout and after built maintenance to guarantee the construction process success.

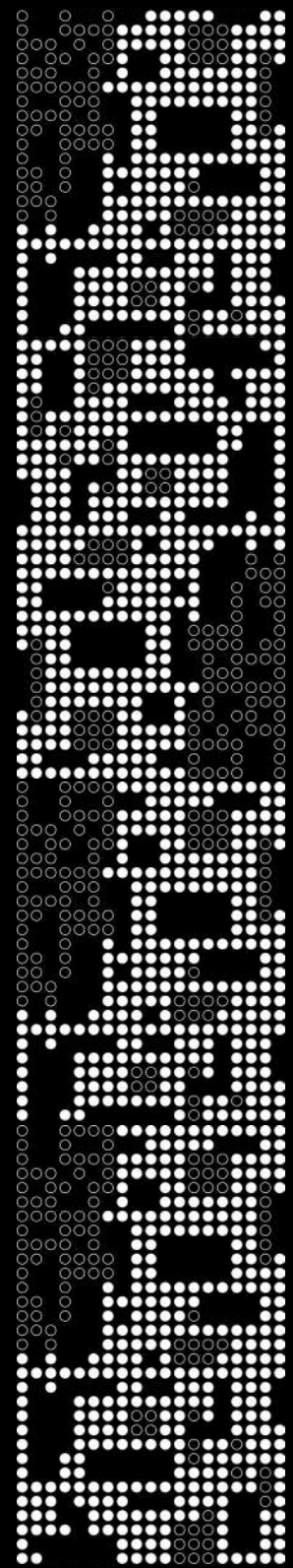
- Project Management.
- Construction Supervision.
- Cost and value Management.
- Property Management.



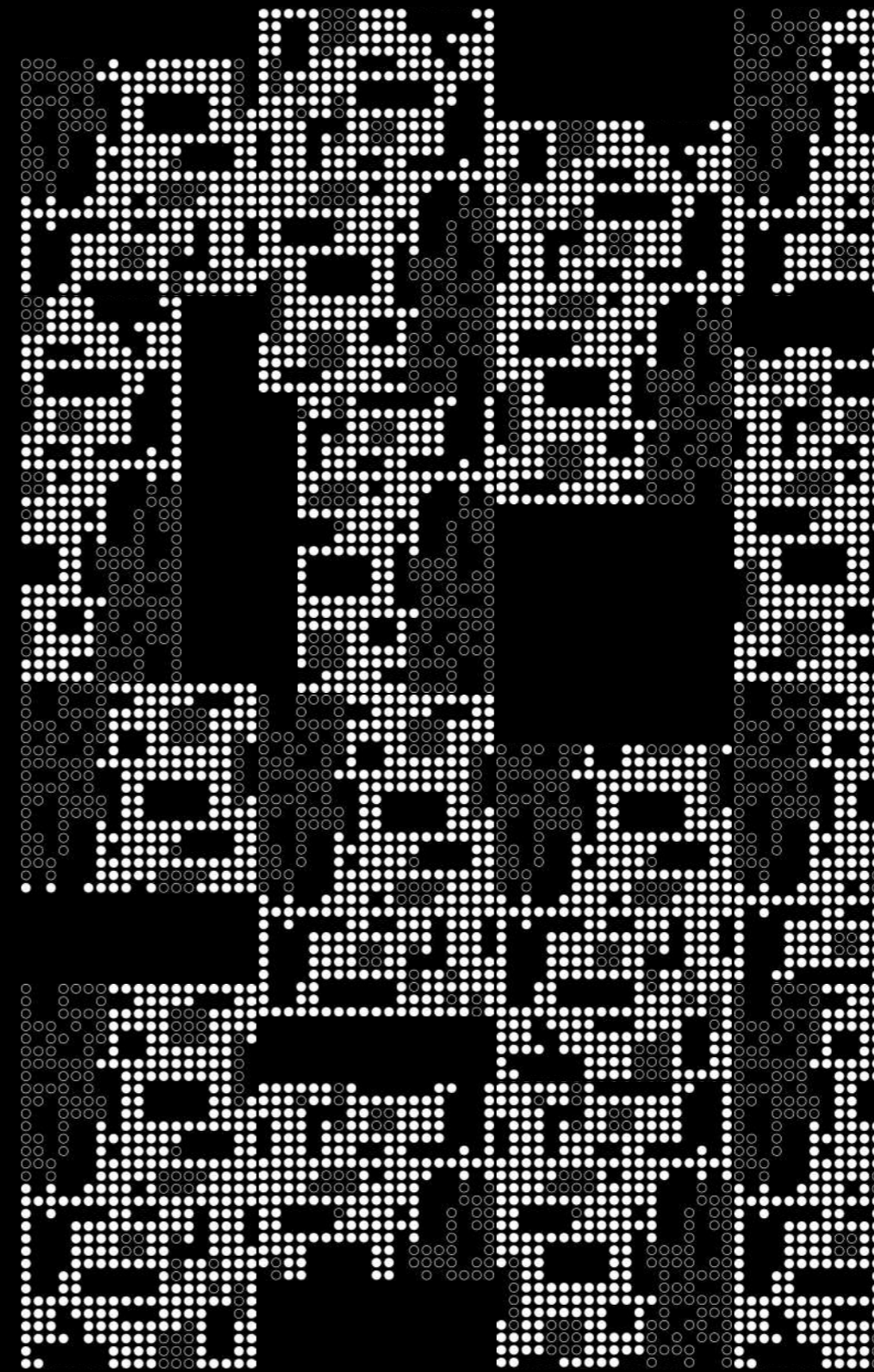
# Projects Locations







## Masterplan Development





## Thessaloniki New Central Business District (CBD).

Thessaloniki, **Greece**, European Territory.

40.65°N, 22.9°E

Compilation date: 2020

### Background:

In Greece and based on Thessaloniki, Atrio team was responsible for transformin an industrial area in the waterfront of the city which is located behind one of the major ports in Greece. Atrio delivered a full urban planning design with the area studies and analysis for the old industrial district plus adding 400.000 sqm of office buildings, parking lots, residential and commercial areas. The project is considered one of the biggest developmental projects to improve the economy index of the city and make it an international business core in Greece.

### Scope Of Services:

- A- Spatial composition analysis.
  - Municipal urban maps review.
  - Traffic analysis.
  - Solid and void studies.
  - Urban connections investigation.
  - Identification of the urban profile.
  - Functionality organisation inspection.

B- Full Urban Master plan design.

C- The Full Design of the city skyline by proposing the buildings volumes to be developed by local architects under the supervision of Atrio Team.

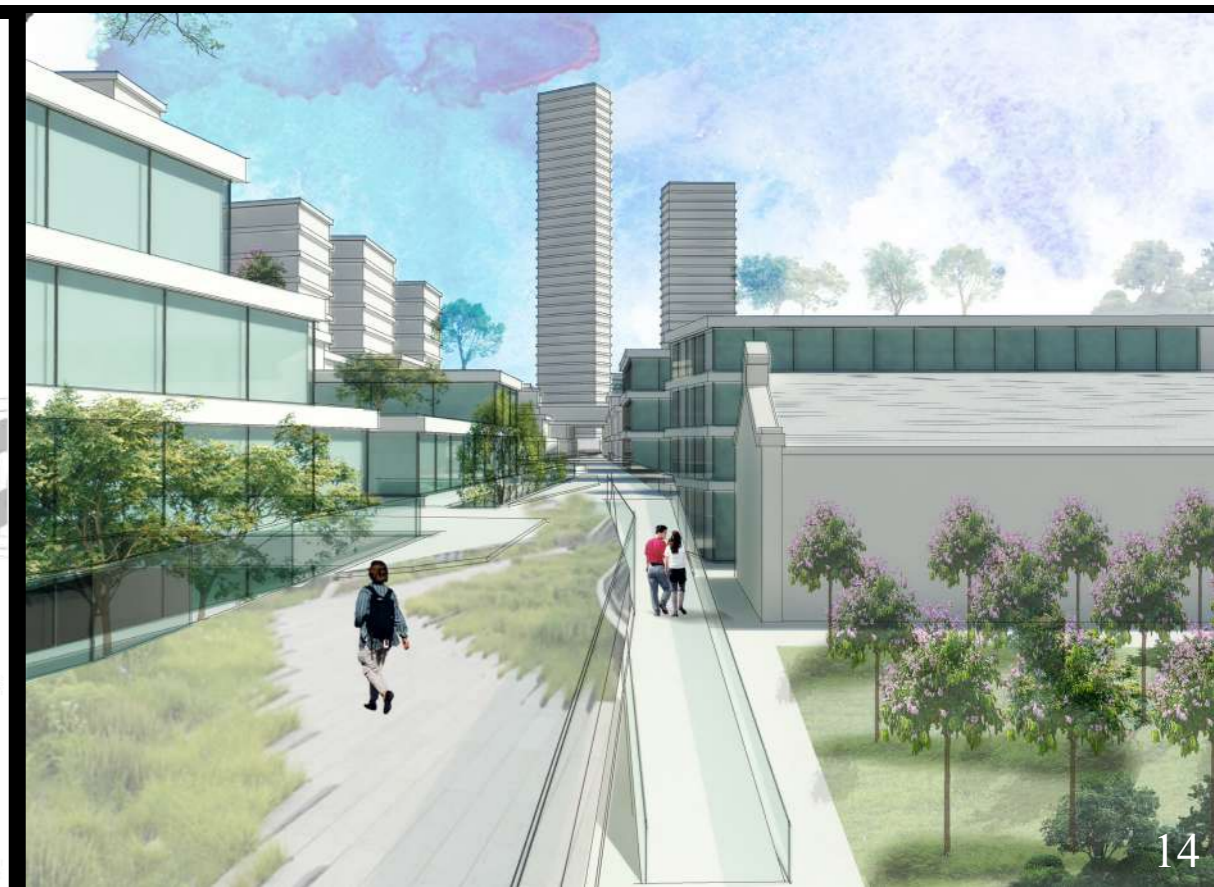
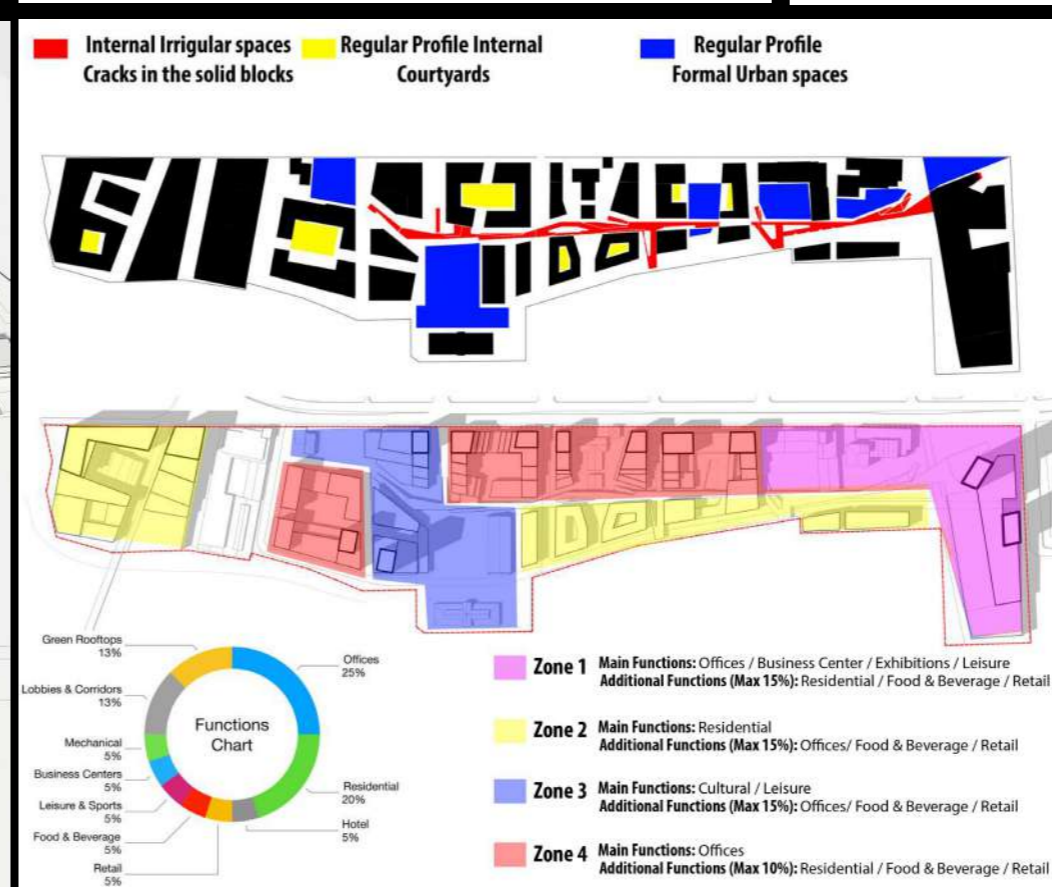
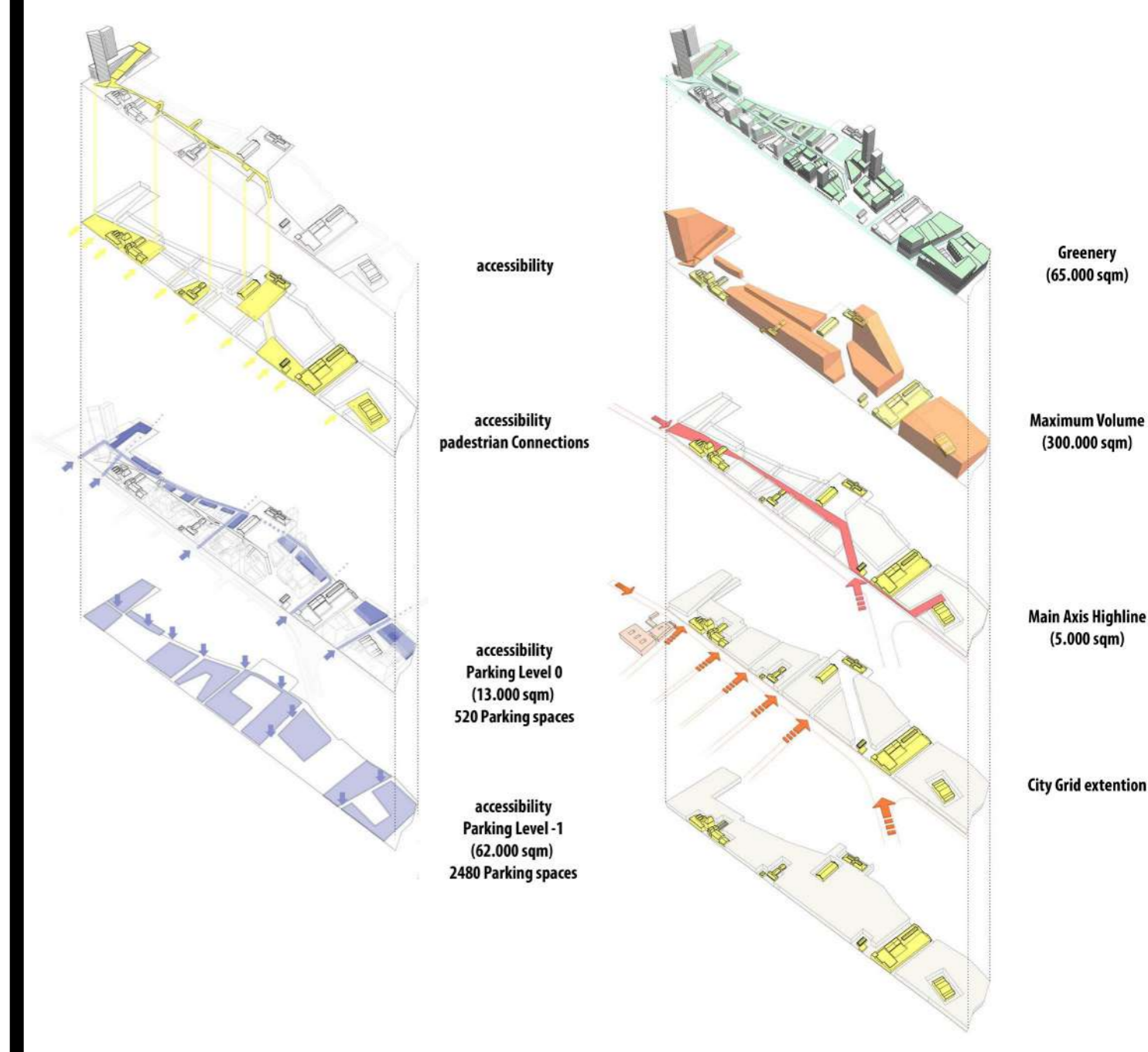
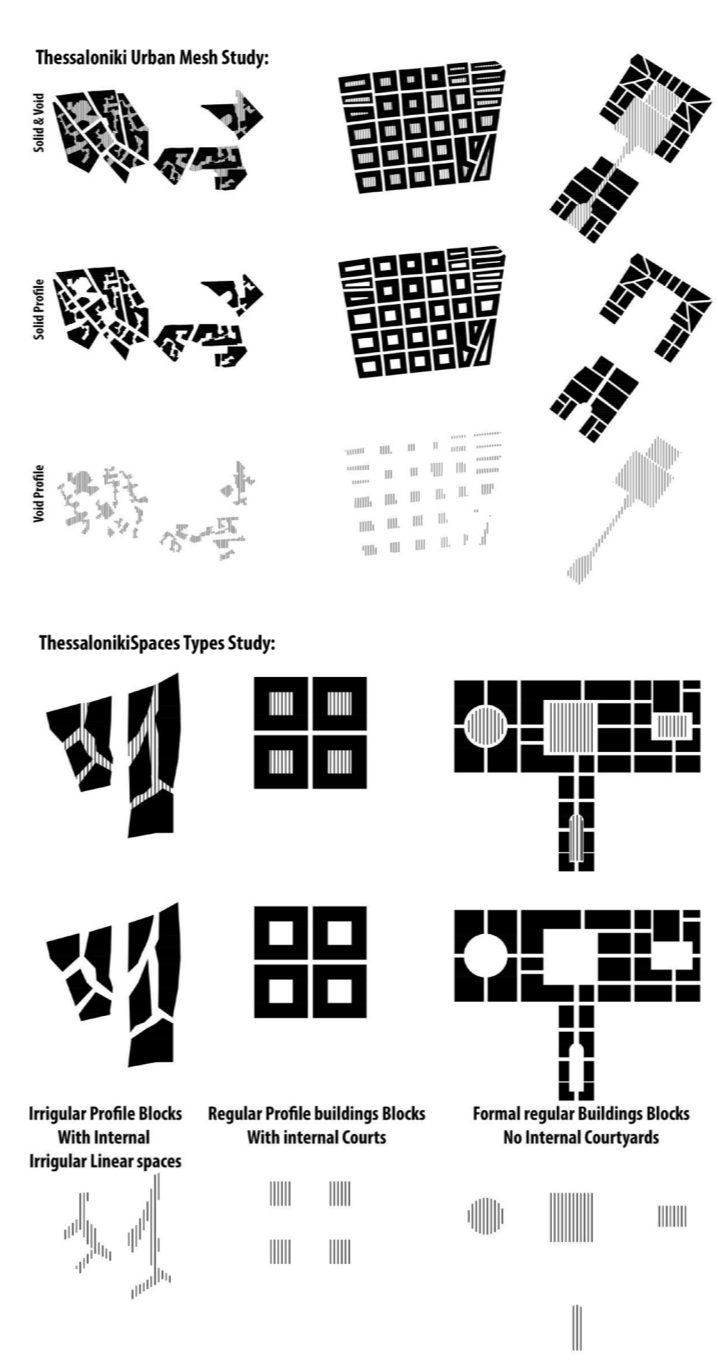
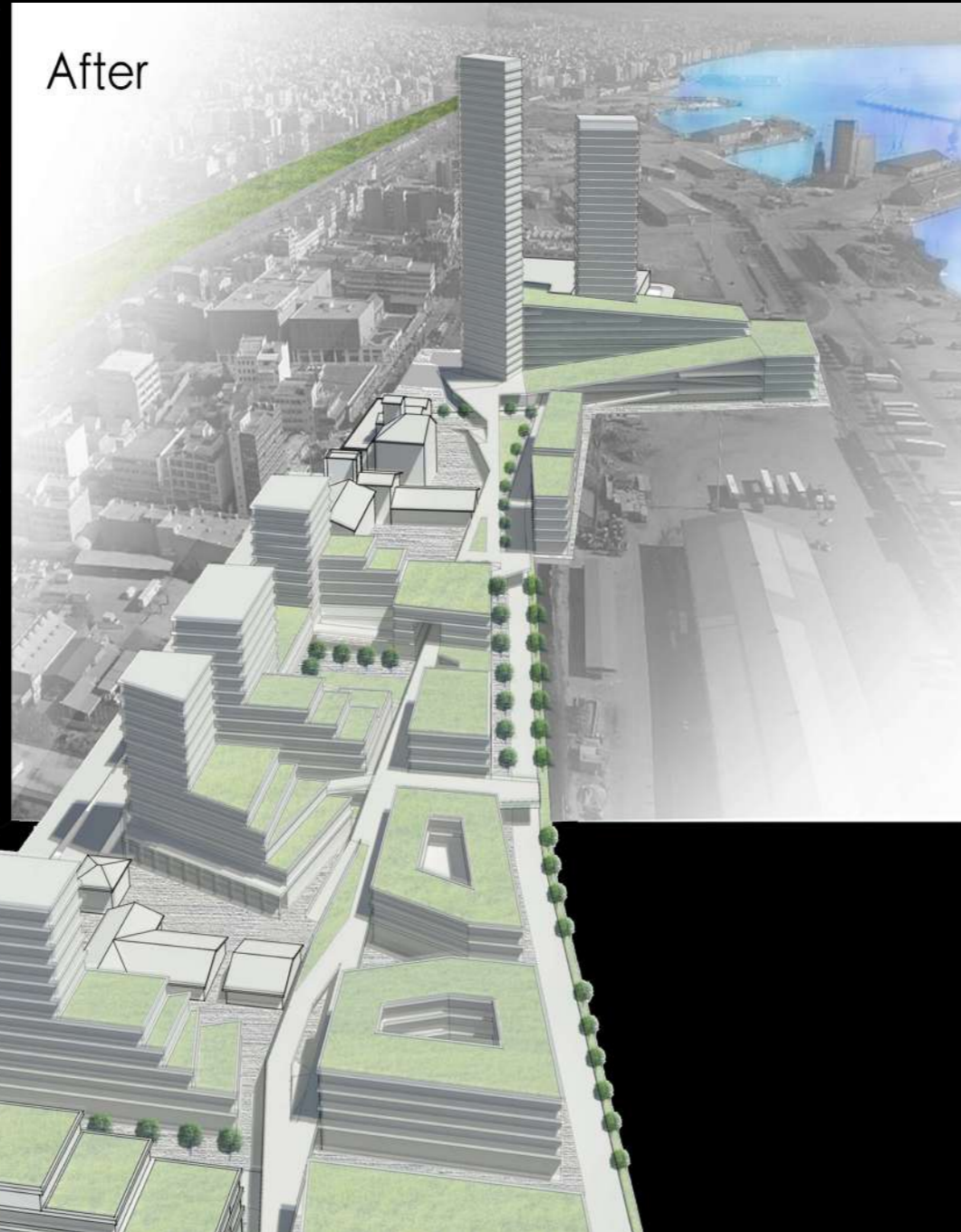
### Partners:

Arch. Gergana Marks.

### Client:









## Les Halles & Châtelet.

Paris, France, European Territory.

48°51'44.41" N, 2°20'41.05" E

Compilation date: 2019

### Background:

The Les Halles underground project was one of the pioneers regarding the underground complexes. It was planned by Utudjian and Renaud Heim de Balsac in 1967 and continued until 1970. Now the intervention with the over ground is under construction through establishing the Forum de Les Halles – designed by Patrick Berger and Jacques Anziutti - and the public spaces is under construction to be redesigned. This area is considered one of the most important ones regarding the metropolitan transportation network, as it is a meeting point between the metro and RER system underground. Adding to that, it is including several functions like sports area with underground swimming pool, cinema complex, triple height exhibition open area, commercial center and underground parking lots.

### Scope Of Services:

- A- Spatial composition analysis.
- Municipal urban maps review.
  - Abstracting and simplify.
  - Allocation analysis.
  - Checking the urban density in the district.
  - Urban connections investigation.
  - Identification of the urban profile.
  - Functionality organisation inspection.

- B- Urban way of living research and serving.  
C- checking the consequences of the spatial composition application of the urban lifestyle of Paris center.

### Target:

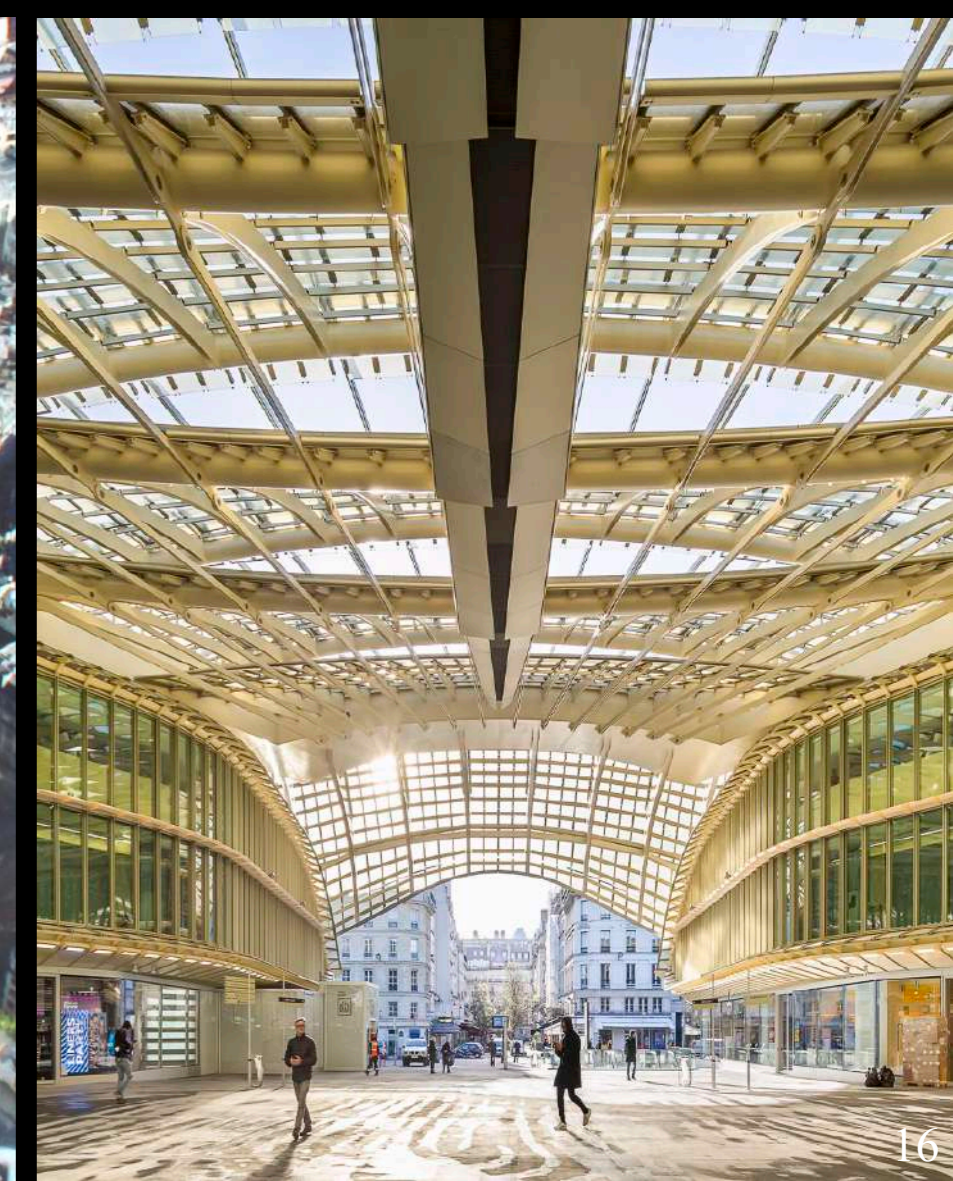
- The main target in this project is to present a new strategy for the underground spaces based on their spatial composition and allocation, to increase the value of these nodes.
- Our recommendations' goal is to lift up the economical and social merit of those entities and attract giant investors to exploit these spaces.
- Our methodology is used to raise the profit to both sides, public and private sectors.

### Partners:

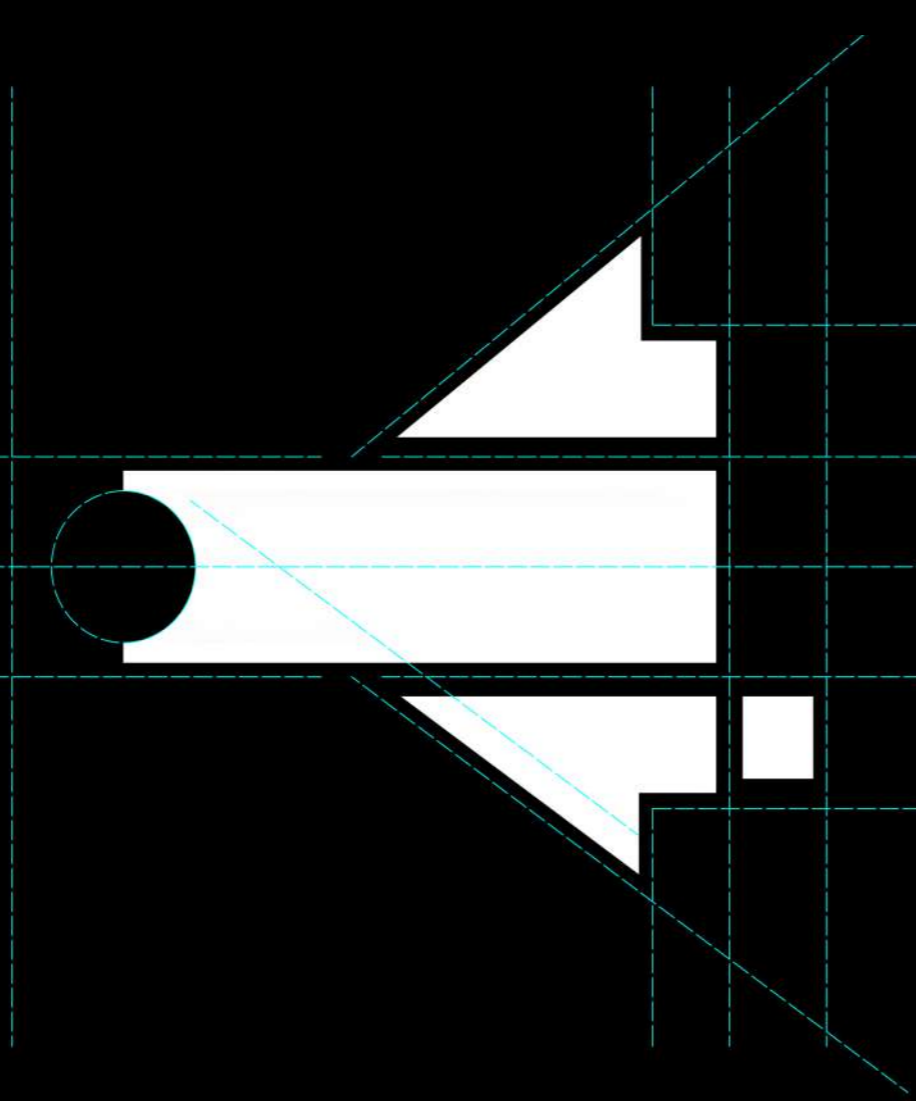
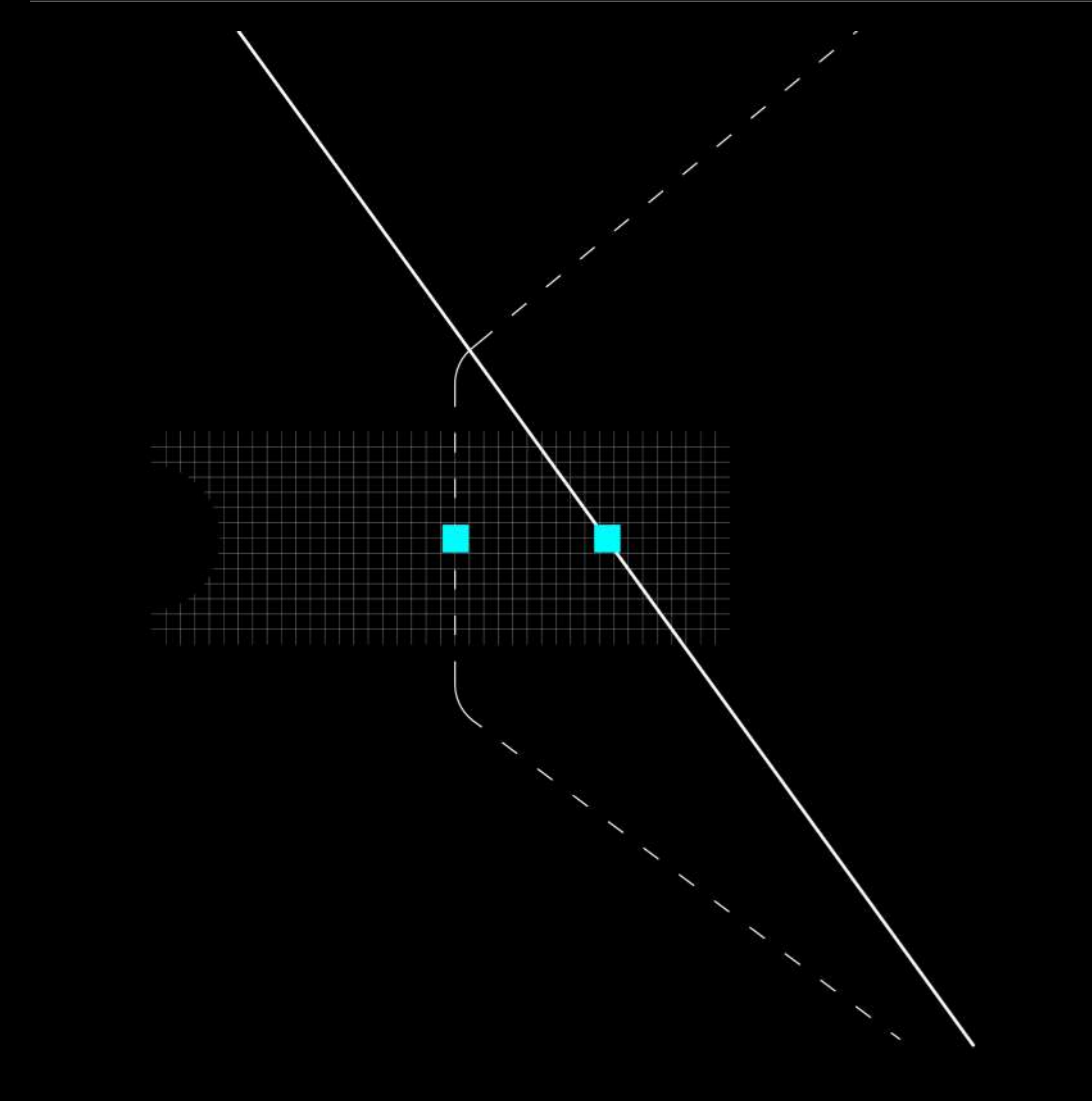
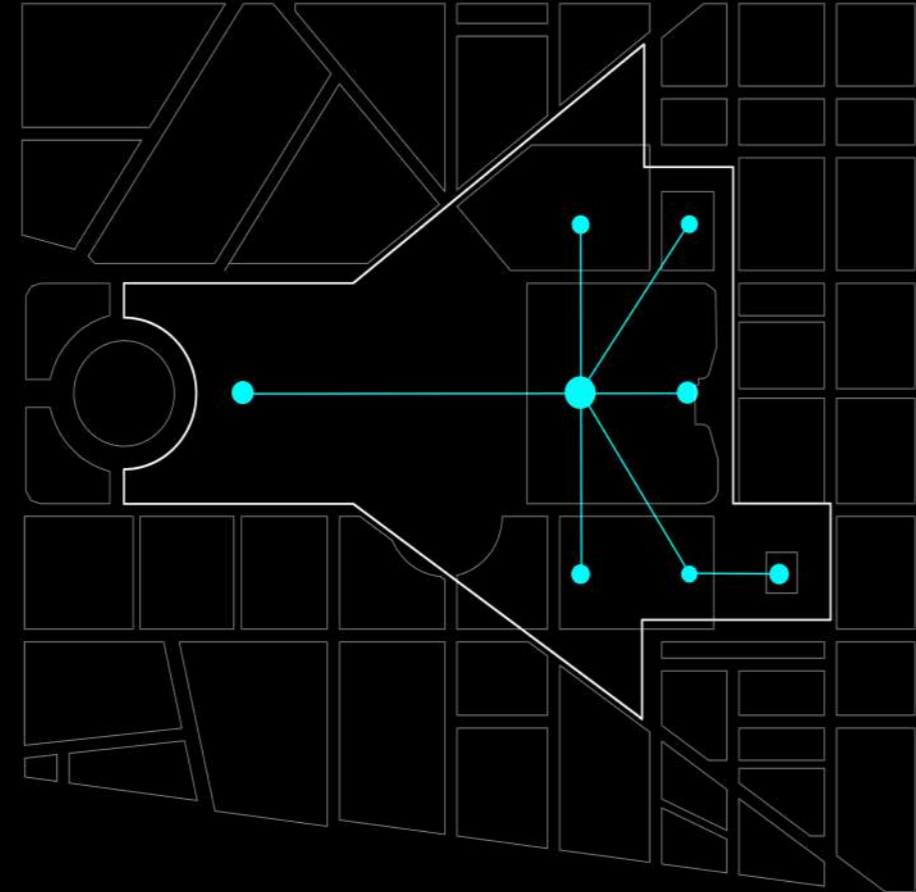
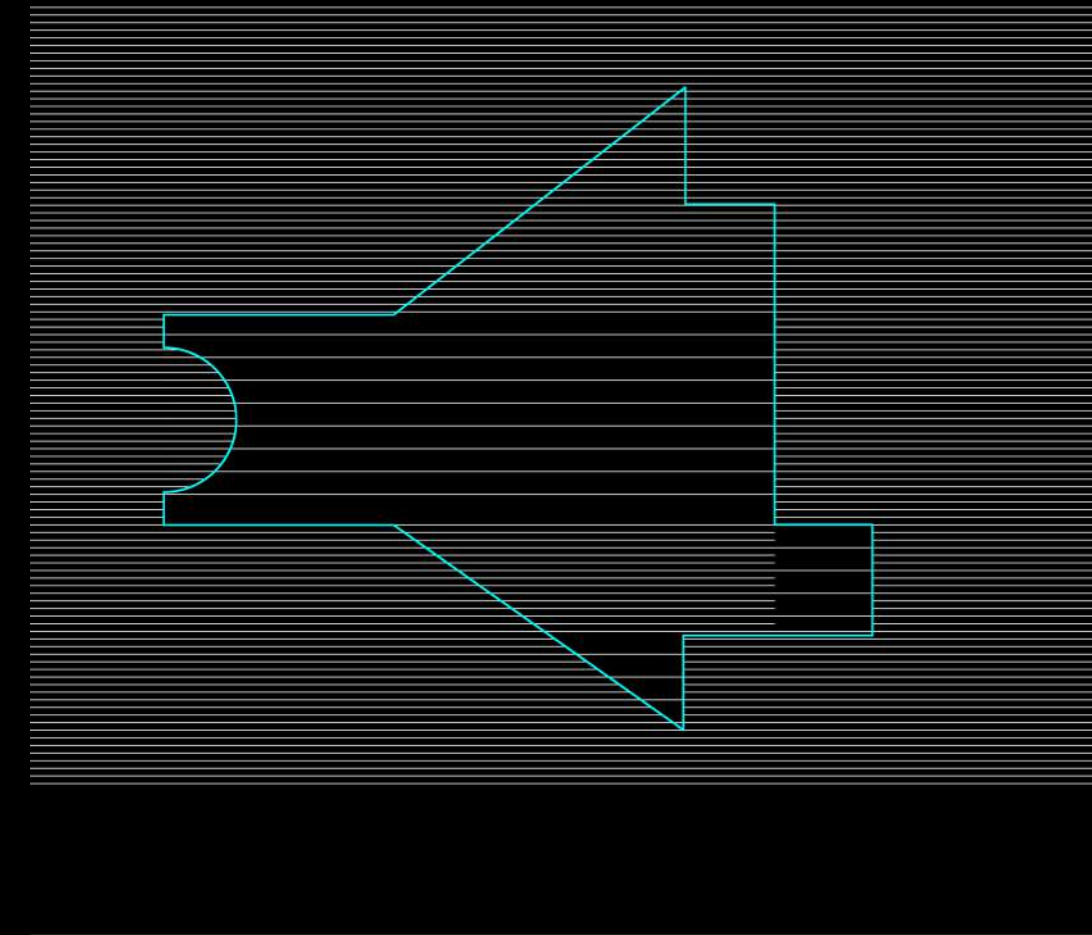
PATRICK BERGER  
JACQUES ANZIUTTI  
architectes



### Client:









## Carrousel du Louvre.

Paris, France, European Territory.

48°51'45.42'' N, 2°20'06.06'' E

Compilation date: 2019

### Background:

The Carrousel du Louvre area design initiated in 1989 by I.M Pei and then decision was made to expand and be connected to the metropolitan station of Palais Royal. This area is considered as one of the landmarks of Paris through the glass pyramid architectonic intervention between the underground area and the over ground Louvre Square and located on the main axis of Grande Arche de la Défense, Champs-Élysées street and Arc du Triomphe. The UUN area is containing several functions that are needed in the contemporary era such as the museum extension, the commercial area, the multi use halls and the parking lots of the Louvre area.

### Scope Of Services:

A- Spatial composition analysis.

- Municipal urban maps review.
- Abstracting and simplify.
- Allocation analysis.
- Checking the urban density in the district.
- Urban connections investigation.
- Identification of the urban profile.
- Functionality organisation inspection.

B- Urban way of living research and serving.

C- checking the consequences of the spatial composition application of the urban lifestyle of Paris center.

### Target:

- The main target in this project is to present a new strategy for the underground spaces based on their spatial composition and allocation, to increase the value of these nodes.
- Our recommendations' goal is to lift up the economical and social merit of those entities and attract giant investors to exploit these spaces.- Our methodology is used to raise the profit to both sides, public and private sectors.

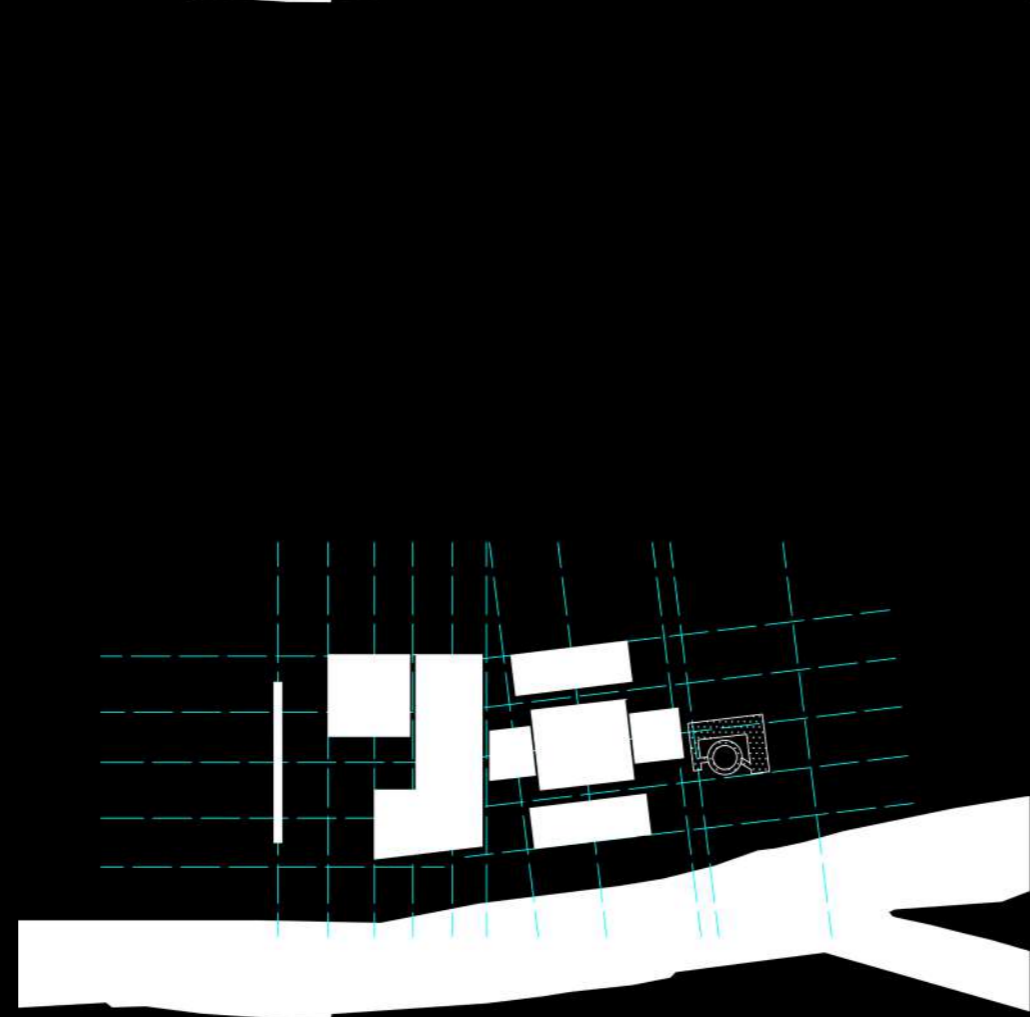
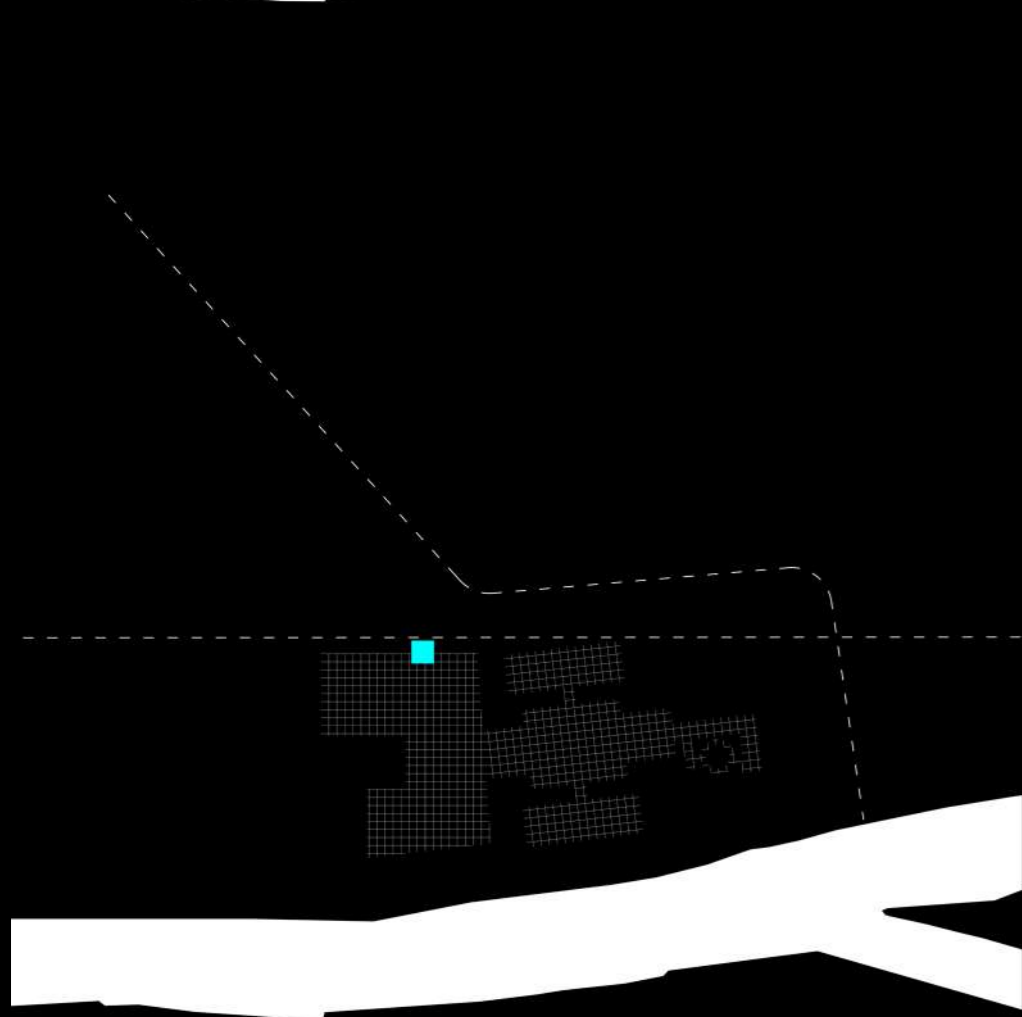
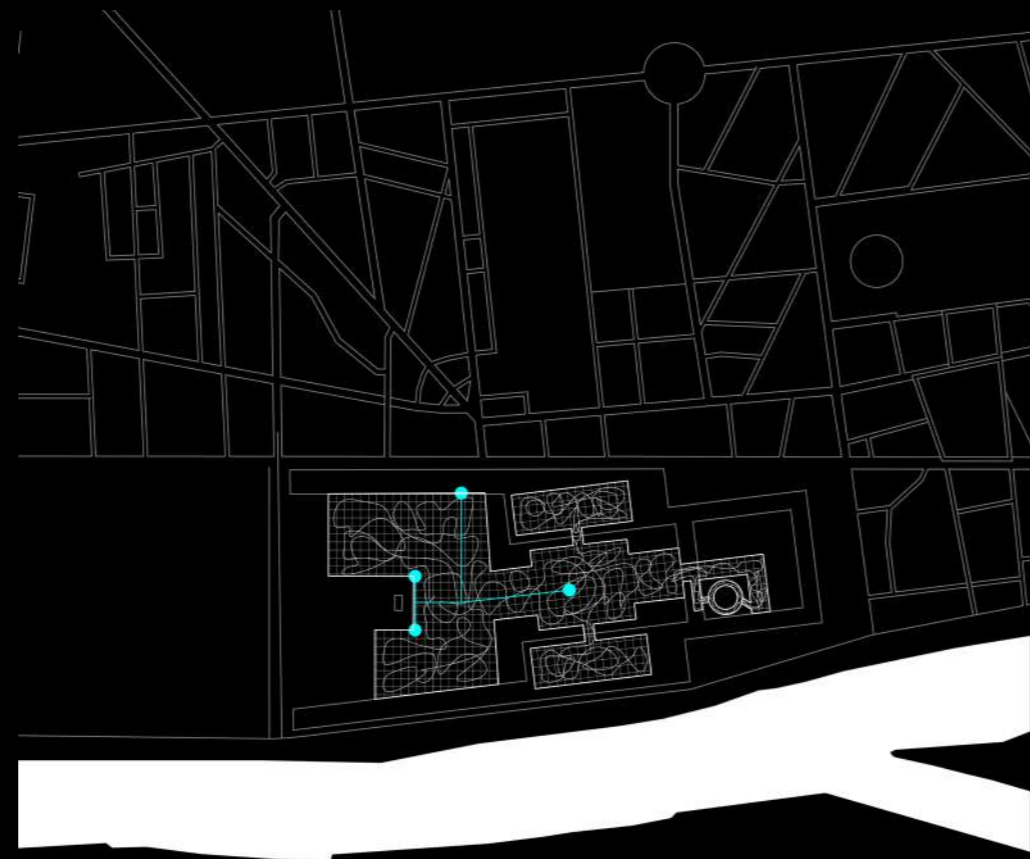
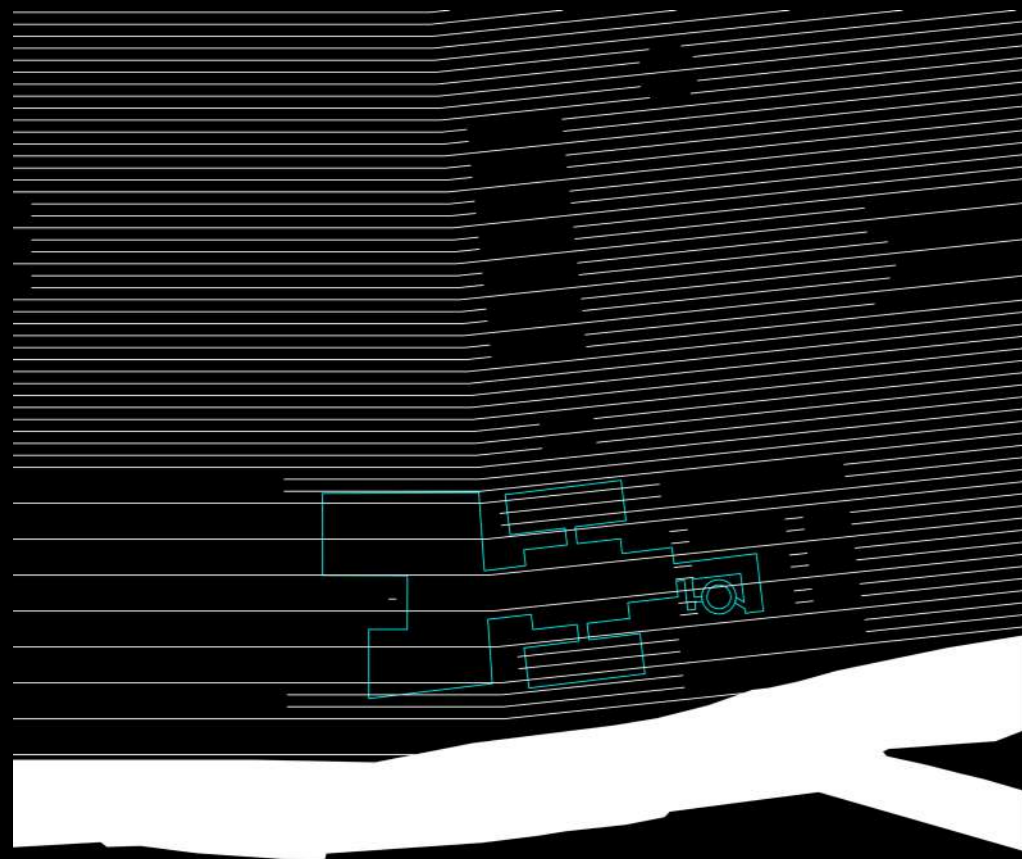
Partners:



Client:









# Houston Downtown Underground Complex.

Texas, USA, North American Territory.

48°51'44.41" N 2°20'41.05" E

Compilation date: 2019

### Background:

In Texas State in USA, the urban strategy is based on the UUN spaces, which are scattered under several buildings that are diffused in the city downtown area. Each space is considered as the basement of the covering building above and this is why various architects did the underground part. On the other hand, these spaces are connected together through established underground pedestrian tunnels network to move from a space to another. Although the large scale of the distributive area where the UUN spaces expand in, they establish two main dominant functions, commercial one and underground parking areas.

### Scope Of Services:

- A- Spatial composition analysis.
  - Municipal urban maps review.
  - Abstracting and simplify.
  - Allocation analysis.
  - Checking the urban density in the district.
  - Urban connections investigation.
  - Identification of the urban profile.
  - Functionality organisation inspection.

B- Urban way of living research and serving.

C- checking the consequences of the spatial composition application of the urban lifestyle of Houston downtown.

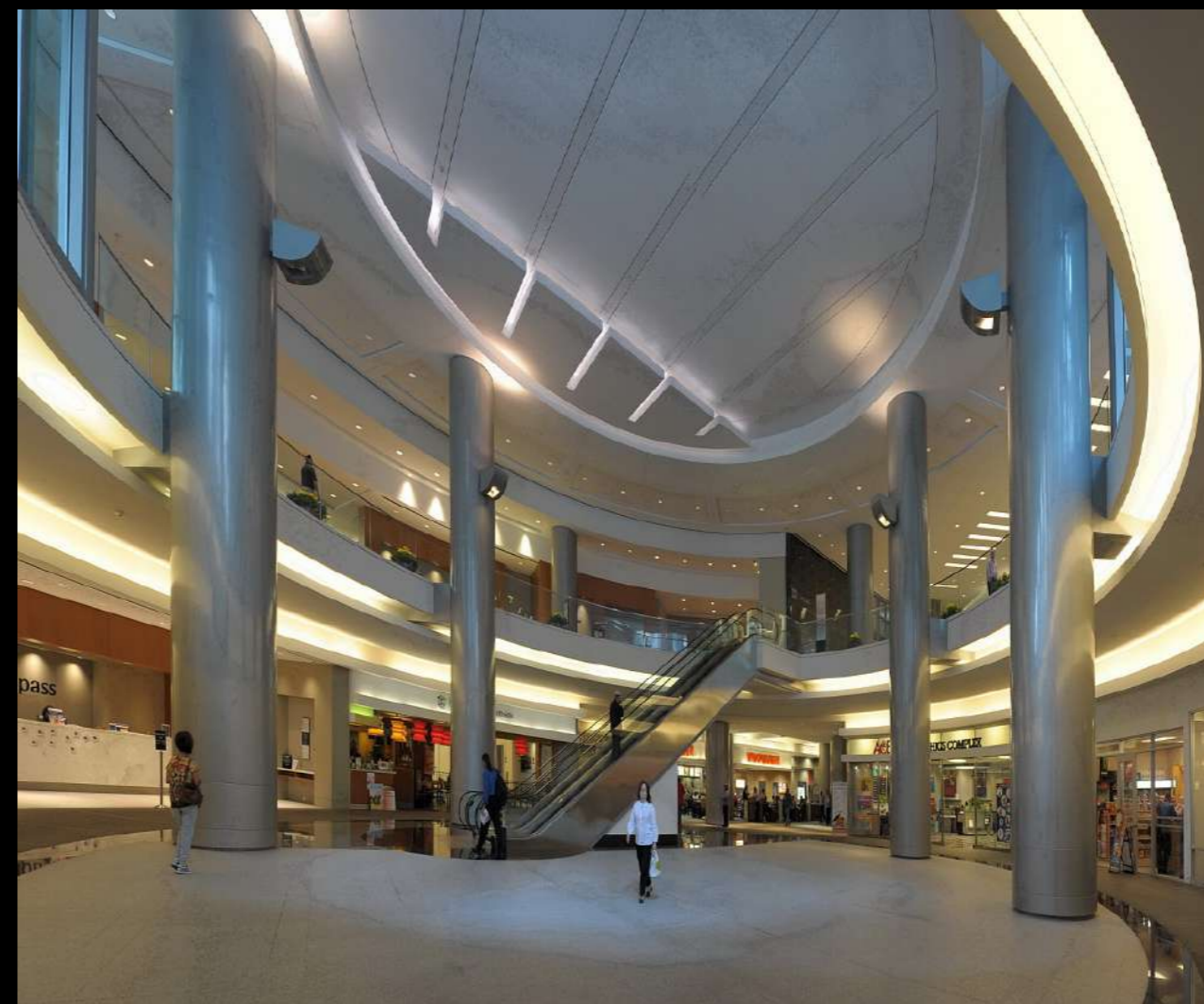
### Target:

- The main target in this project is to present a new strategy for the underground spaces based on their spatial composition and allocation, to increase the value of these nodes.
- Our recommendations' goal is to lift up the economical and social merit of those entities and attract giant investors to exploit these spaces.- - Our methodology is used to raise the profit to both sides, public and private sectors.

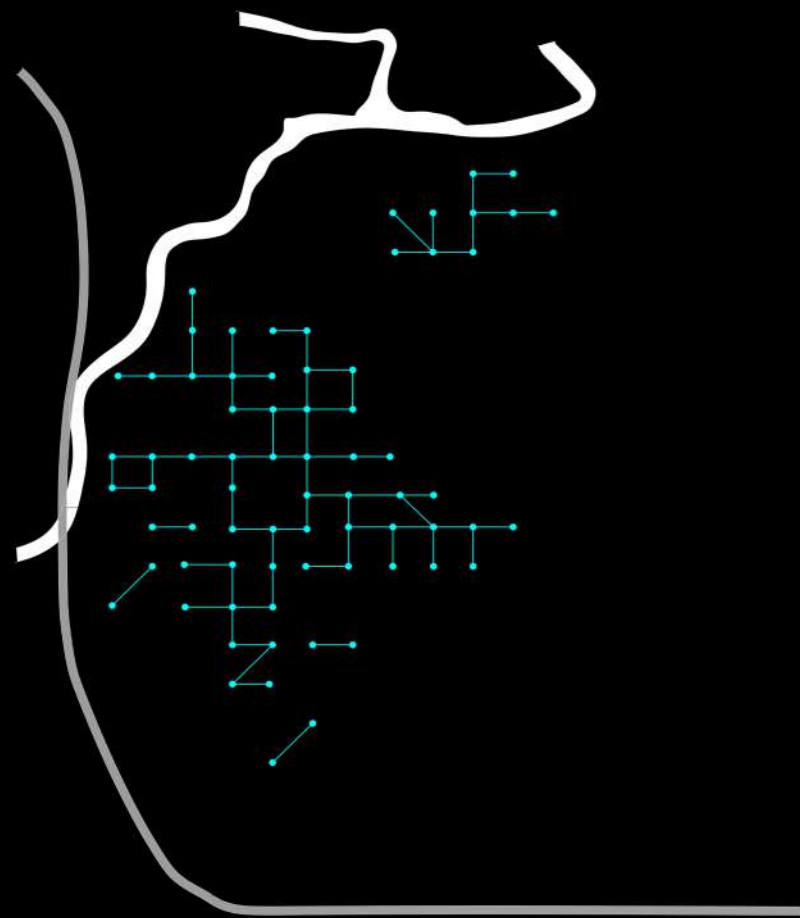
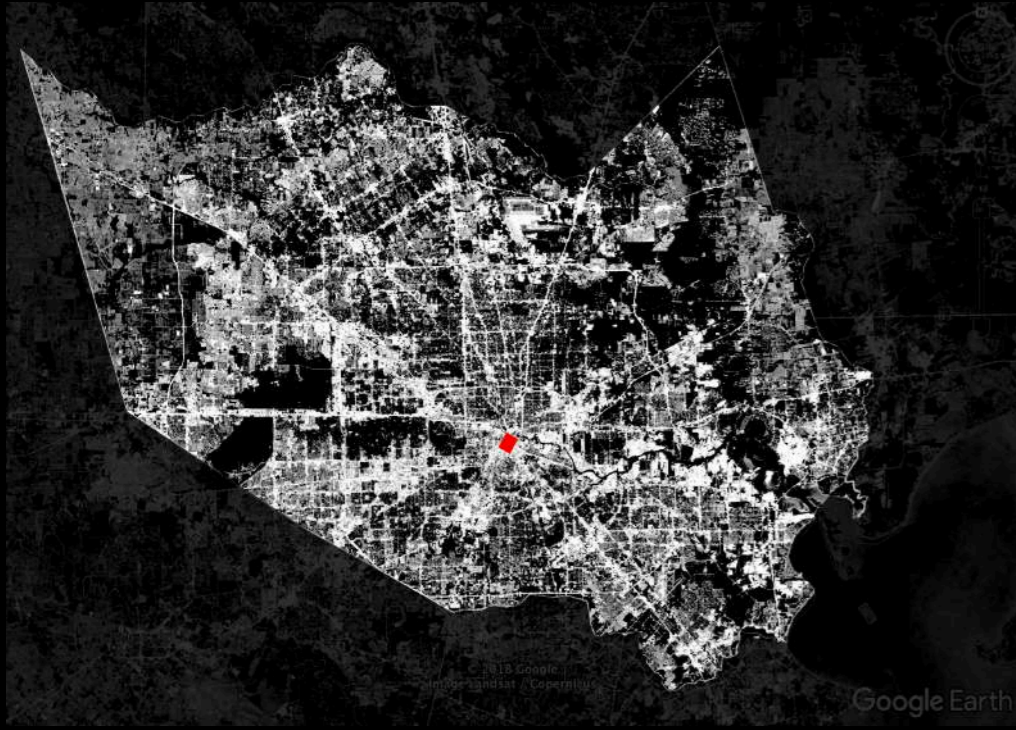
Partners:



Client:









# Montréal Downtown Underground Complex.

Quebec, **Canada**, North American Territory.

45°30'06.15"N 73°34'02.12"W

Compilation date: 2019

## Background:

Located in the east of Canada, the UUN spaces are spread under several buildings in the city downtown area. Most of these underground-scattered spaces are counted as the basements of the covering buildings. These spaces are connected together through a parallel underground pedestrian network where the on foot user can move freely between the different downtown parts through an internal spaces underground without the need to go up in the urban external spaces or streets. On the other hand these spaces are linked with the metropolitan system underground. The UUN spaces have commercial dominant function while they contain other types in a relatively smaller scale like cultural, educational, sports or exhibitions area.

## Scope Of Services:

A- Spatial composition analysis.

- Municipal urban maps review.
- Abstracting and simplify.
- Allocation analysis.
- Checking the urban density in the district.
- Urban connections investigation.
- Identification of the urban profile.
- Functionality organisation inspection.

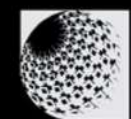
B- Urban way of living research and serving.

C- checking the consequences of the spatial composition application of the urban lifestyle in Montreal financial district.

## Target:

- The main target in this project is to present a new strategy for the underground spaces based on their spatial composition and allocation, to increase the value of these nodes.
- Our recommendations' goal is to lift up the economical and social merit of those entities and attract giant investors to exploit these spaces.- - Our methodology is used to raise the profit to both sides, public and private sectors.

Partners:



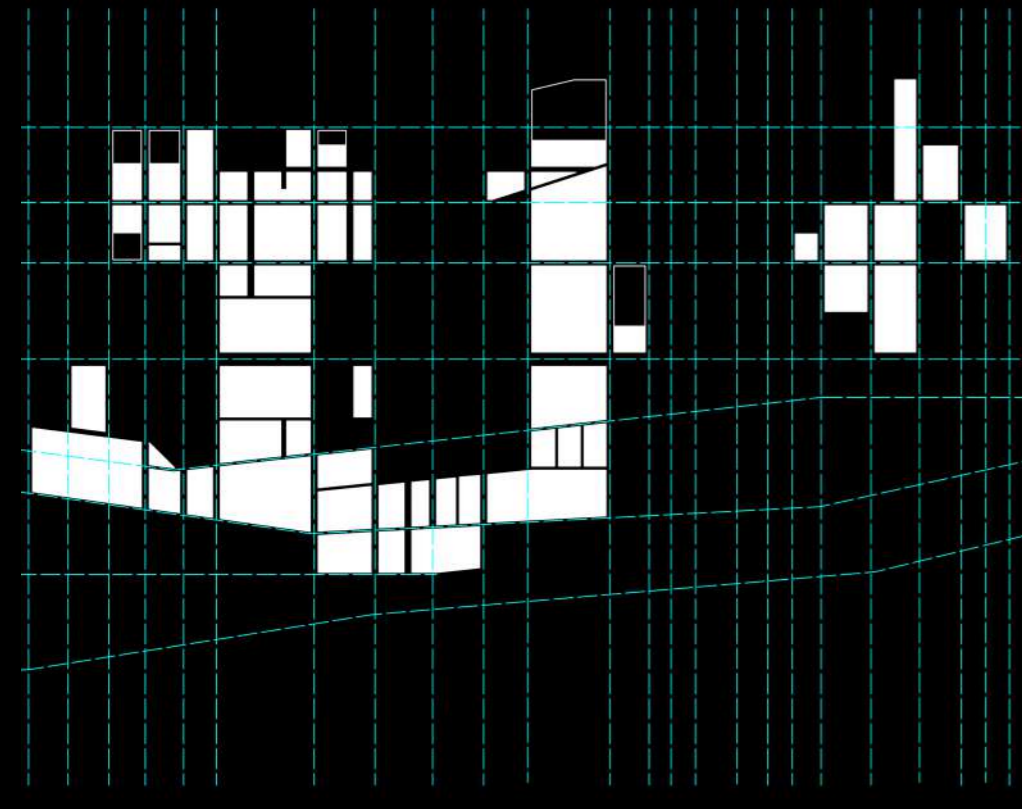
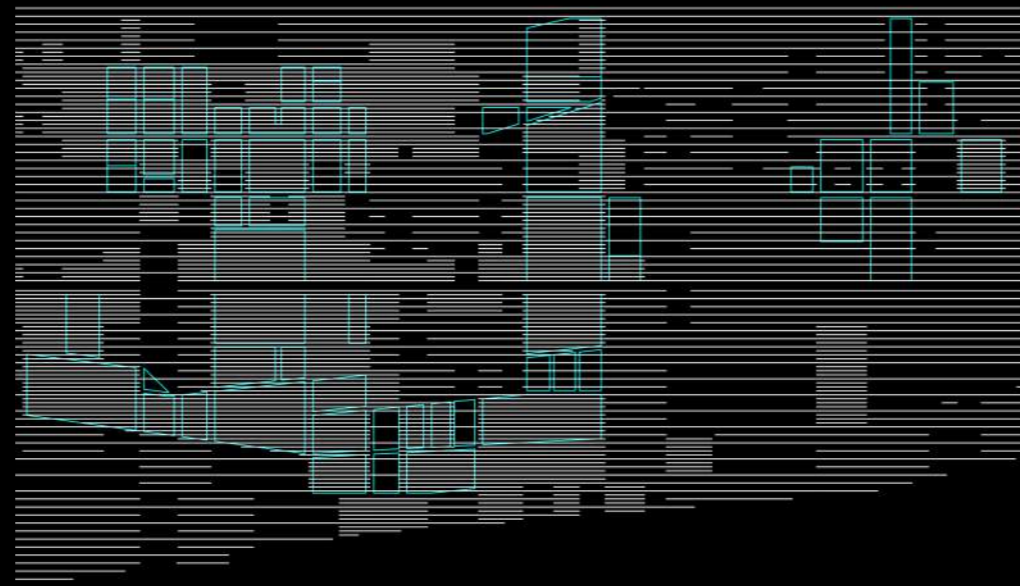
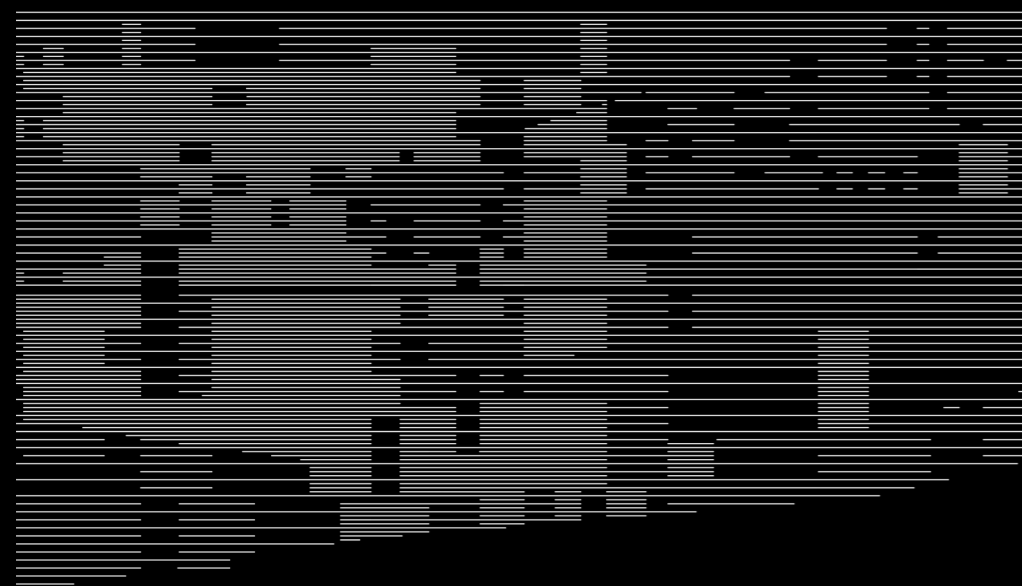
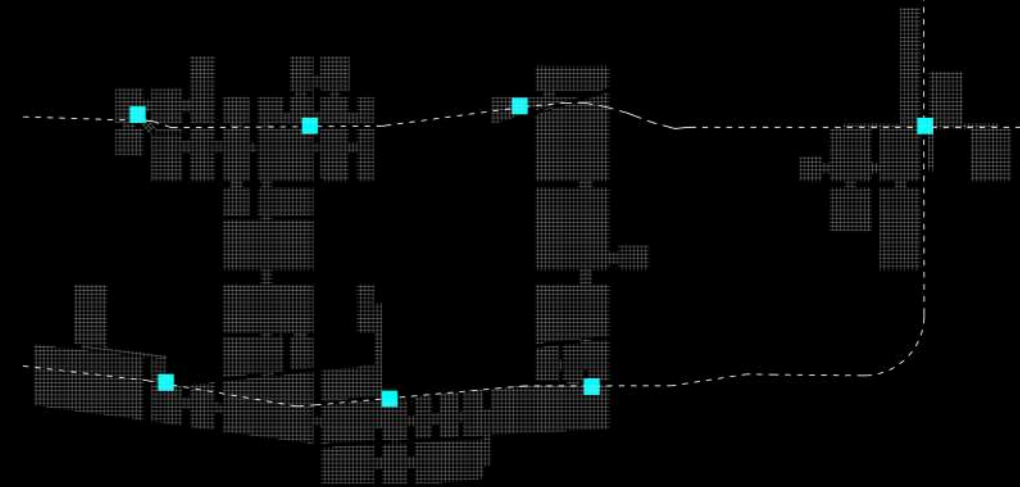
Associated research Centers  
for the Urban Underground Space  
Association des Centres de recherche  
sur l'Utilisation Urbaine du Sous-sol



Client:









## Crysta Nagahori.

Osaka, Kansai, **Japan**, Far-Eastern Territory.

34°40'29.72"N 135°30'07.86"E

Compilation date: 2019

### Background:

Under the one main urban vehicular streets, Crysta Nagahori space offers several entrances that provide multi-underpasses from a sidewalk to another where they are located. The on foot passenger can overcome the vehicular flow in the principle large streets through these offered underground spaces. On the other hand, the Crysta Nagahori connects three different metropolitan stations that are located as well under the city transportation route' principle streets. The underground space has two main uses, commercial ones and the established metropolitan stations.

### Scope Of Services:

A- Spatial composition analysis.

- Municipal urban maps review.
- Abstracting and simplify.
- Allocation analysis.
- Checking the urban density in the district.
- Urban connections investigation.
- Identification of the urban profile.
- Functionality organisation inspection.

B- Urban way of living research and serving.

C- checking the consequences of the spatial composition application of the urban lifestyle in Osaka CBD.

### Target:

- The main target in this project is to present a new strategy for the underground spaces based on their spatial composition and allocation, to increase the value of these nodes.
- Our recommendations' goal is to lift up the economical and social merit of those entities and attract giant investors to exploit these spaces.- - Our methodology is used to raise the profit to both sides, public and private sectors.

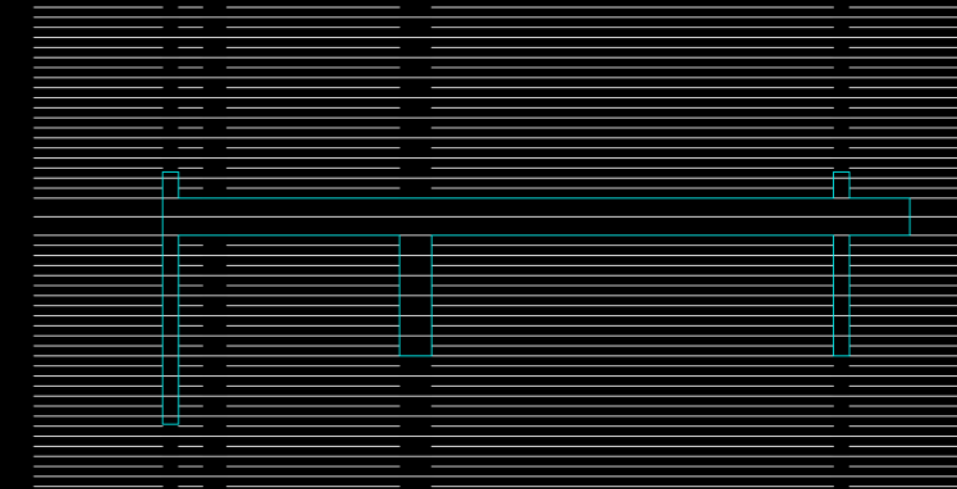
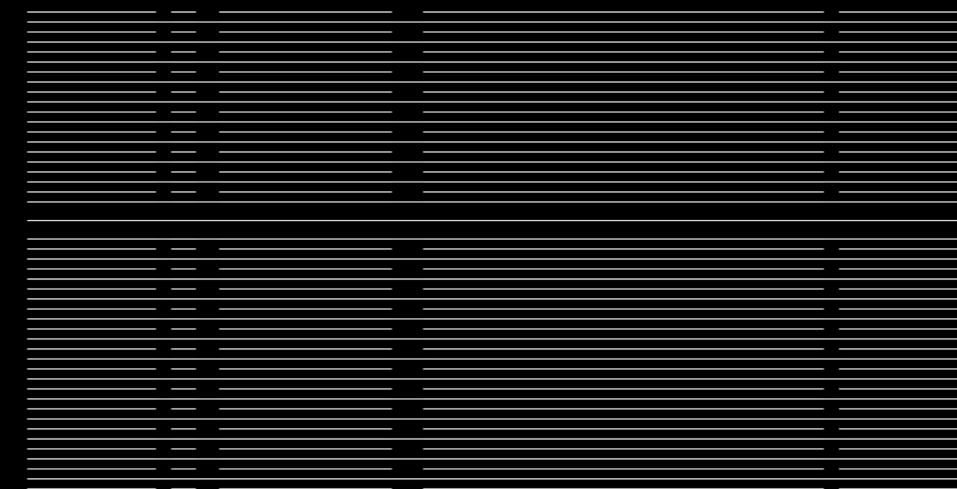
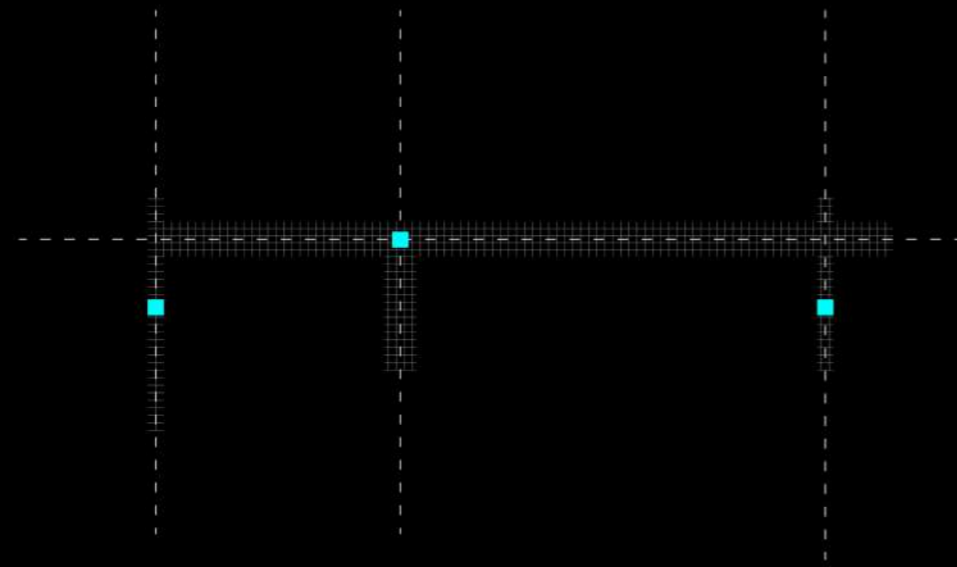
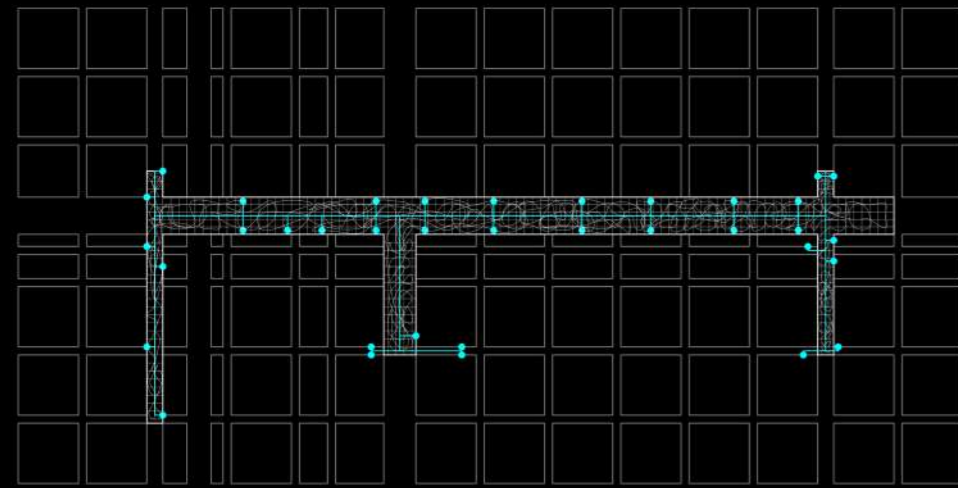
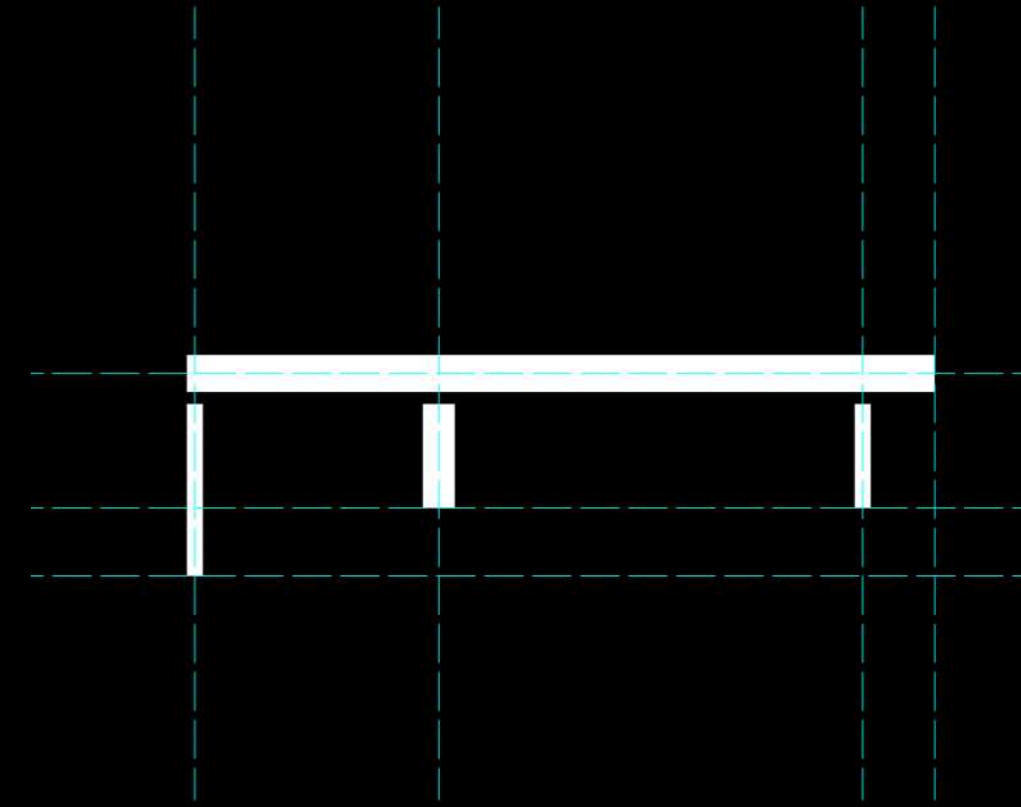
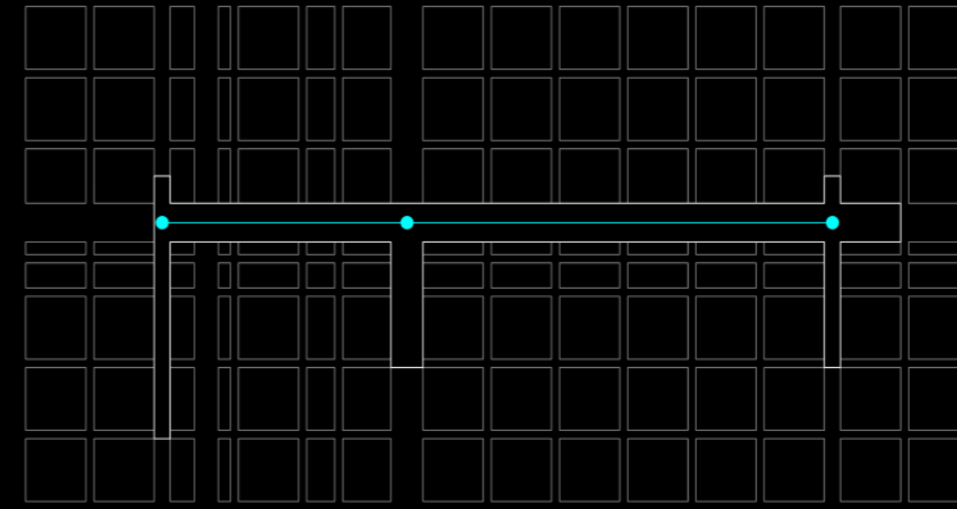
Partners:



Client:









## Tenjin Chikagai Underground Complex.

Fukuoka, Kyushu, **Japan**, Far-Eastern Territory.

34°40'29.72"N 135°30'07.86"E

Compilation date: 2019

### Background:

Tenjin Chikagai is established as a commercial underground area under one of the principle transportation streets in Fukuoka city. The underground space does not just include commercial services but it is also containing two metropolitan stations that are linked through the commercial underground area. The underground nodal space has lots of vertical accesses between the subterranean space and both sidewalks of the covering street to establish a new needed use, which is underpasses system for the city pedestrian users to overcome the main wide vehicular street that acts as an obstacle for the on foot user.

### Scope Of Services:

- A- Spatial composition analysis.
- Municipal urban maps review.
  - Abstracting and simplify.
  - Allocation analysis.
  - Checking the urban density in the district.
  - Urban connections investigation.
  - Identification of the urban profile.
  - Functionality organisation inspection.

B- Urban way of living research and serving.

C- checking the consequences of the spatial composition application of the urban lifestyle of in Fukoka CBD area.

### Target:

- The main target in this project is to present a new strategy for the underground spaces based on their spatial composition and allocation, to increase the value of these nodes.
- Our recommendations' goal is to lift up the economical and social merit of those entities and attract giant investors to exploit these spaces.
- Our methodology is used to raise the profit to both sides, public and private sectors.

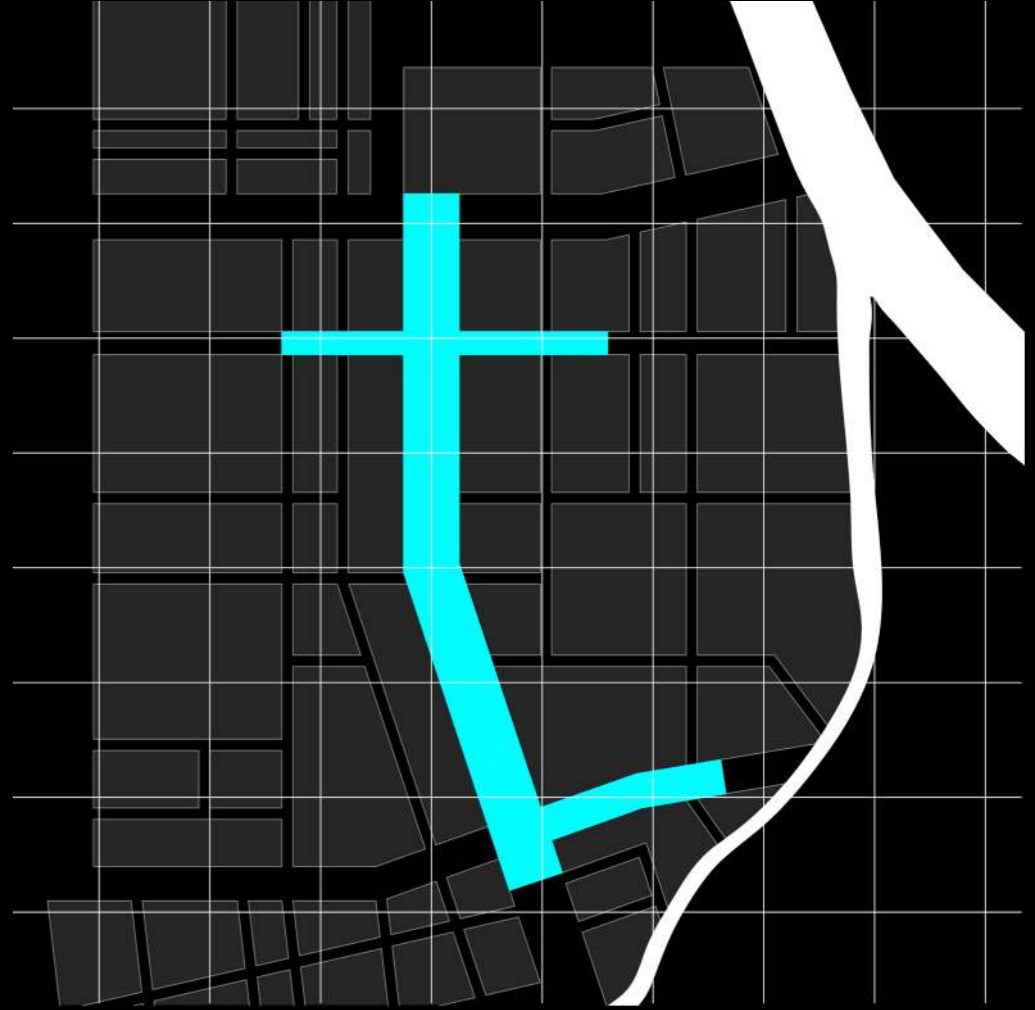
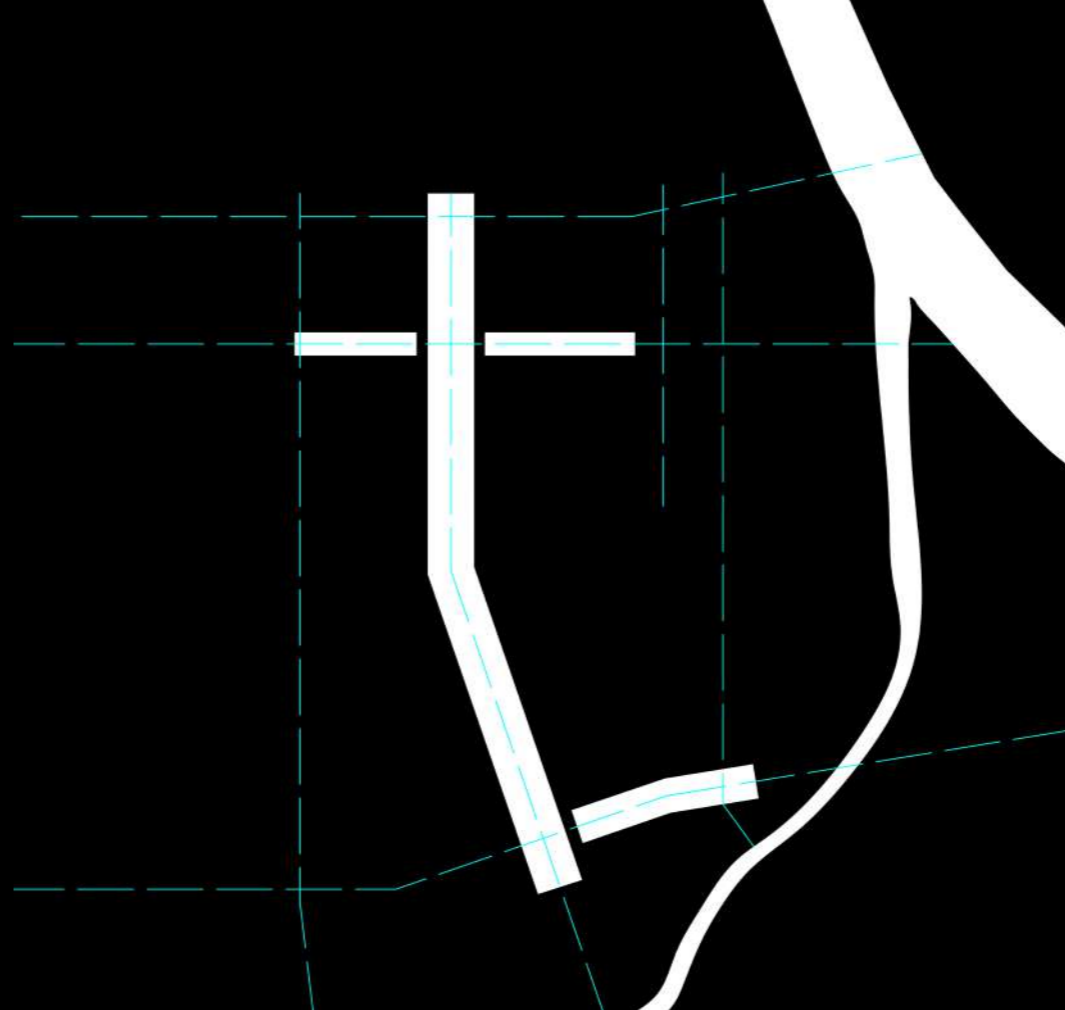
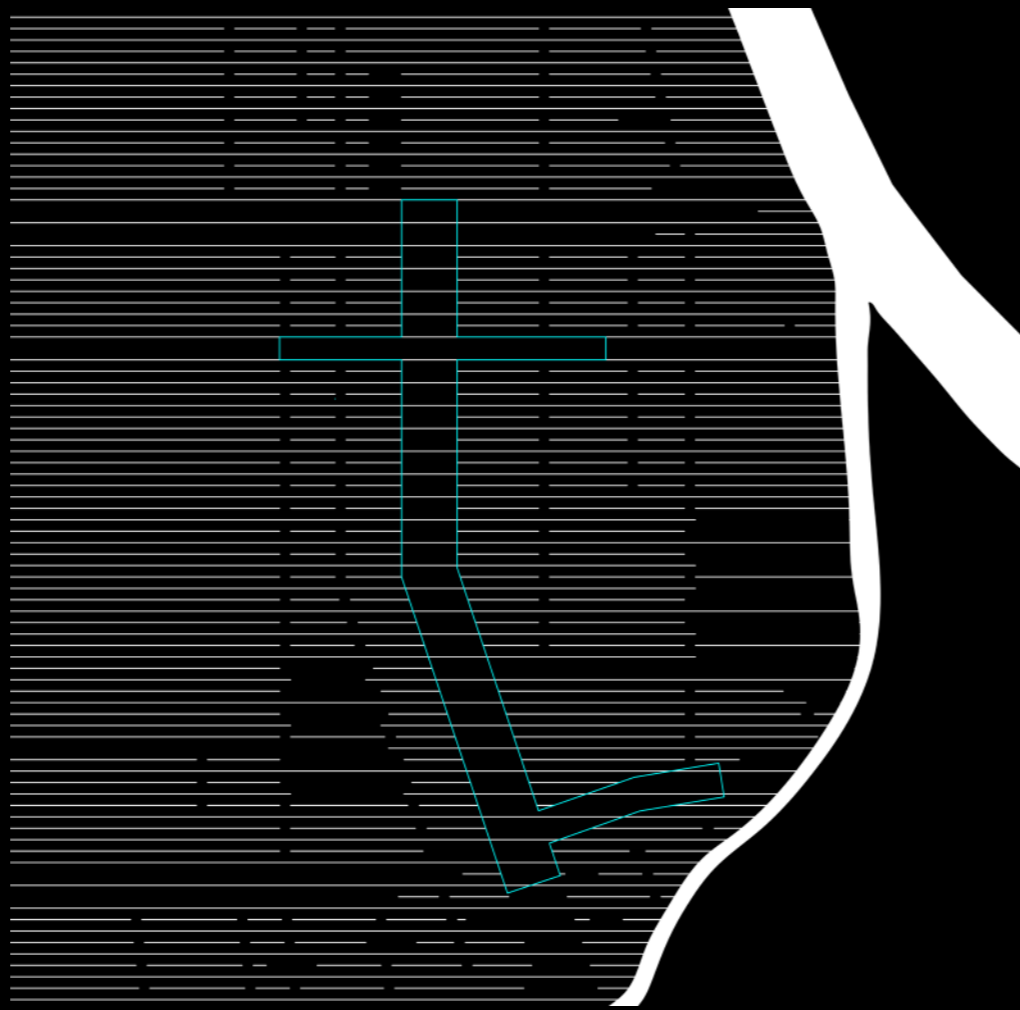
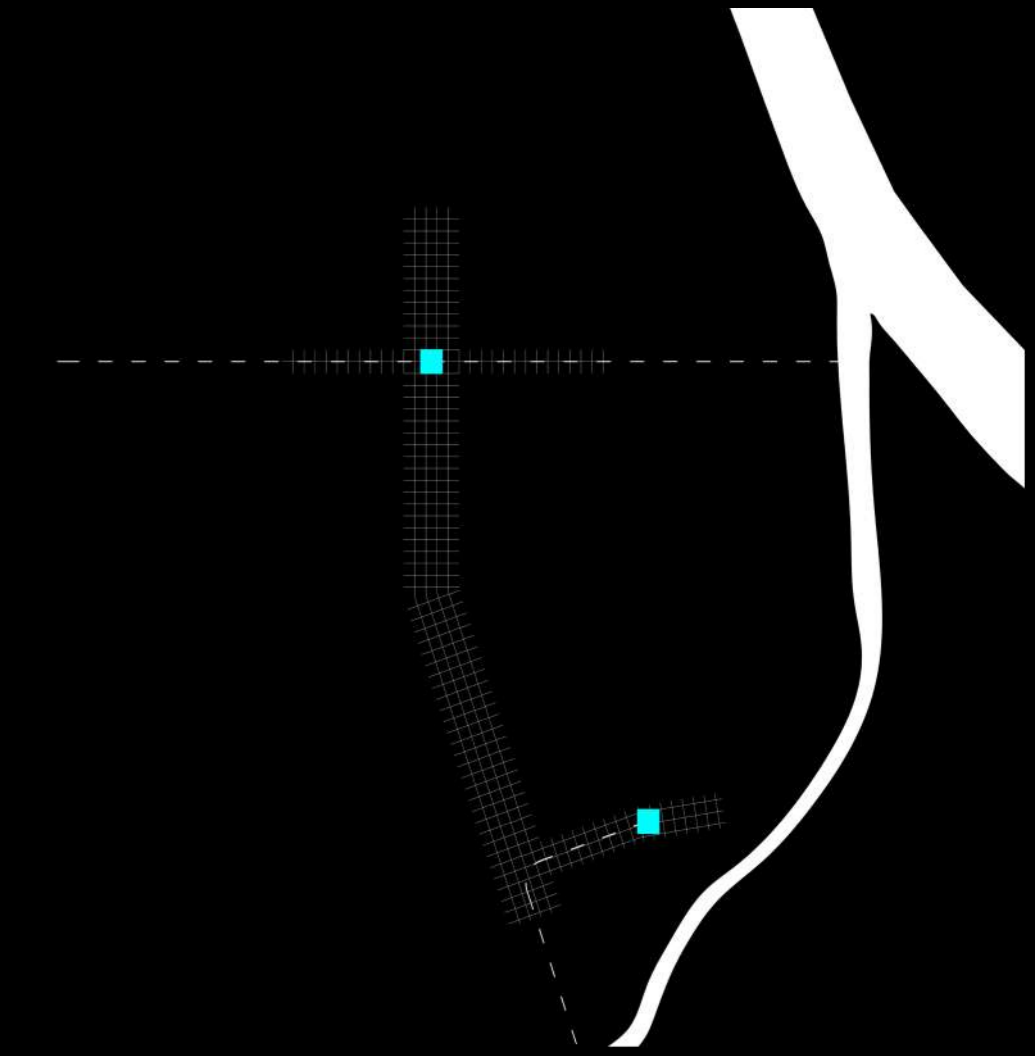
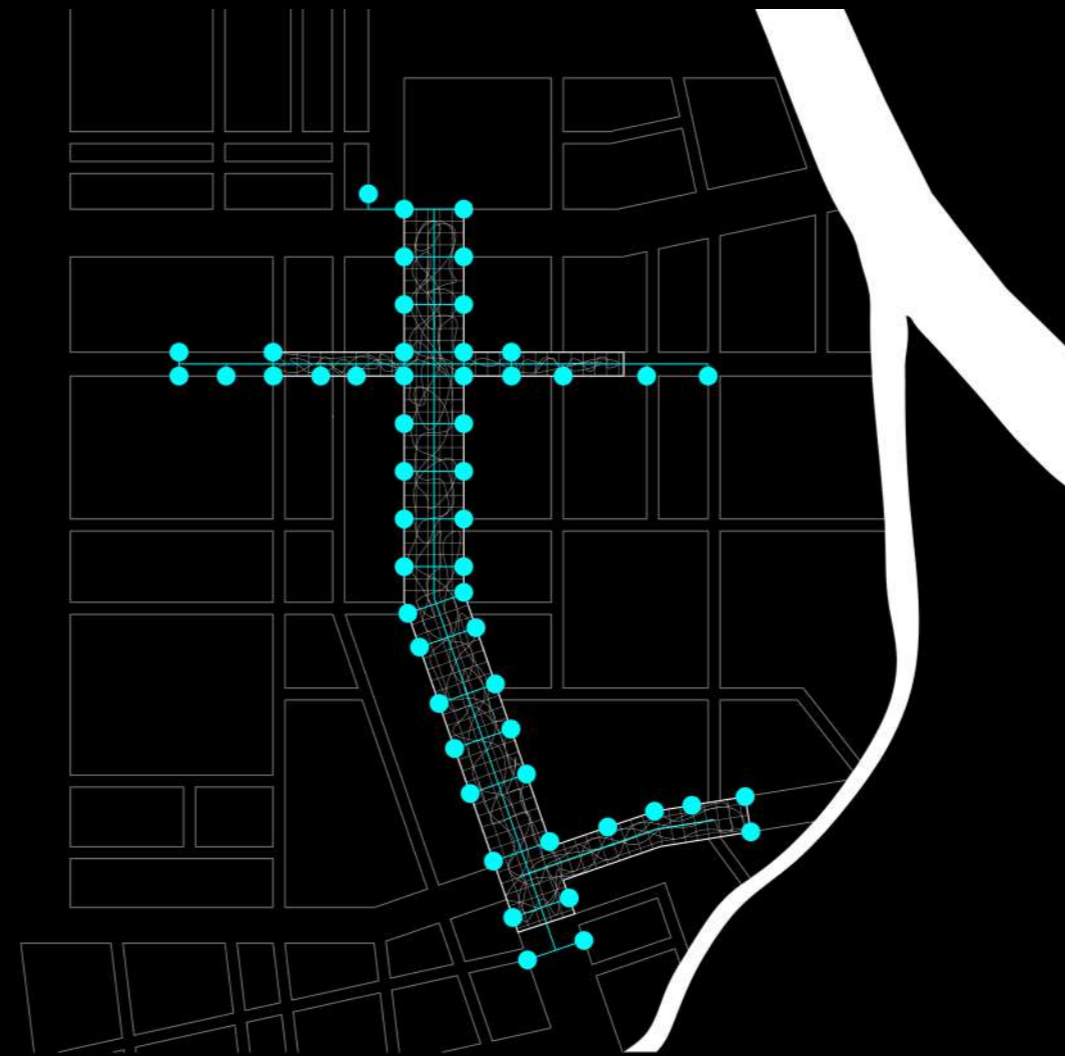
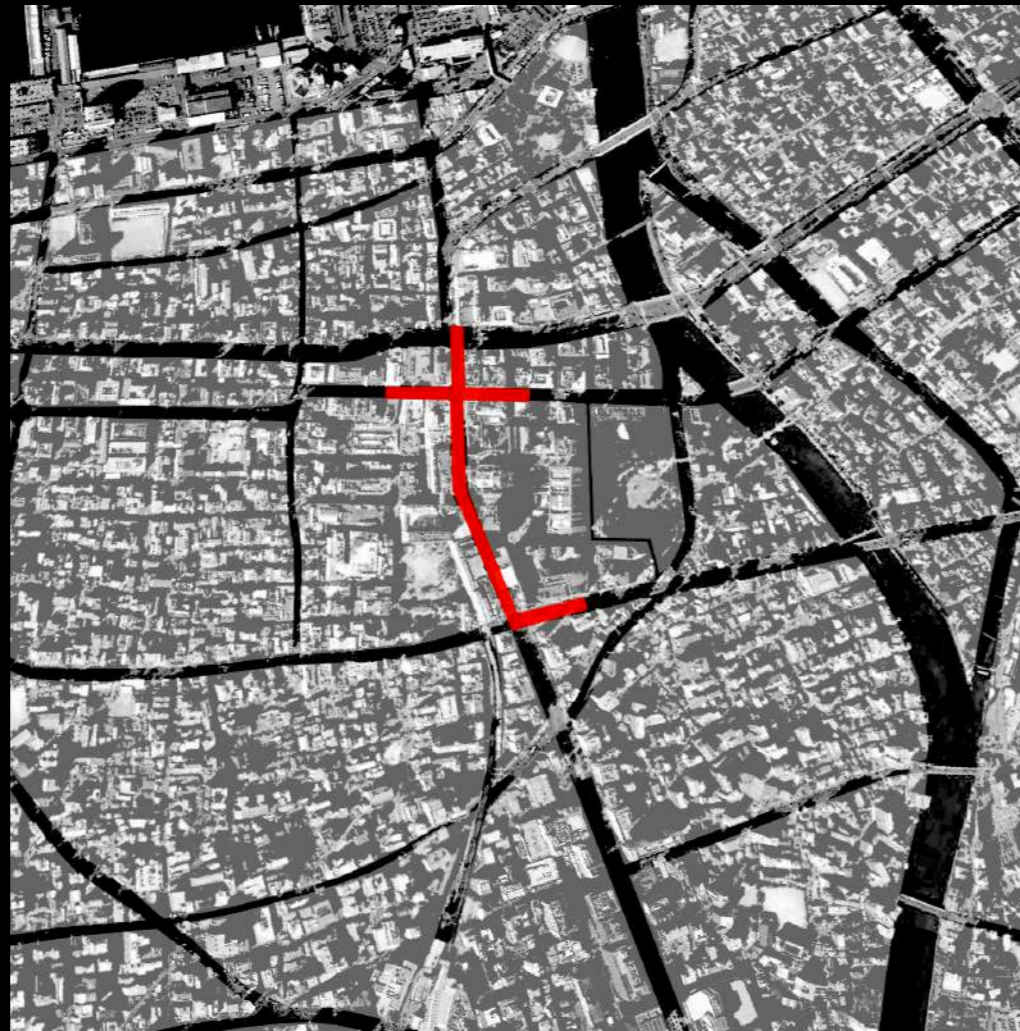
Partners:



Client:









# Tenerife Island south zone development plan.

Tenerife Island, **Spain**, African Territory.

28°16'7"N , 16°36'20"W

Compilation date: 2015

### Background:

Tenerife is the largest and most populous island of the seven Canary Islands; it is also the most populated island of Spain and Macaronesia. The land area is 2,034.38 square kilometres. The population of the island is almost 898,680 inhabitants, which is 43 percent of the total population of the Canary Islands.

The island has the highest elevation of Spain, a World Heritage Site that is the third largest volcano in the world from its base, El Teide.

### Scope Of Services:

- Spatial composition analysis.
- Municipal urban maps review.
- Abstracting and simplify.
- Allocation analysis.
- Checking the urban density in the district.
- Urban connections investigation.
- Identification of the urban profile.
- Functionality organisation inspection.
- Master plan Design Production.
- Production physical models.

### Target:

Our development vision is based on an old camino revival. It is a segment of an old abandoned pathway that starts from Granadilla town centre (Historical) passing through ope fields, green houses, solar fields, main island highway and also is connected to San Isidro town. With all these potentials were good support and gave strong motivation for the idea of reactivating this camino as a future axis of development.

The proposed future development area is inbetween the camino del trigo and barranco del calla. The camino is having also direct connection to the centre of San Isidro city. Moreover the potentials that was mentioned before is making it one of the most important parts to be developed in the island. Also one of the big potentials is that it is already half activated especially in the north part connecting San Isidro to Granadilla which is one of the the oldest town in the south part of the island.

### Partners:

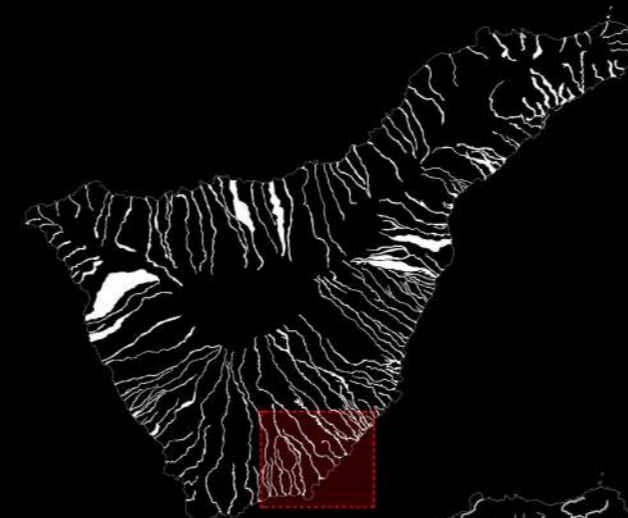
Politecnico di Milano

Arch. Juan Manuel Palerm Salazar

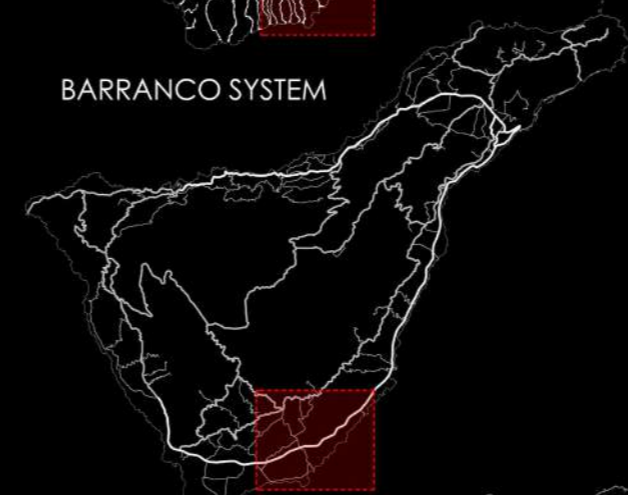


### Client:

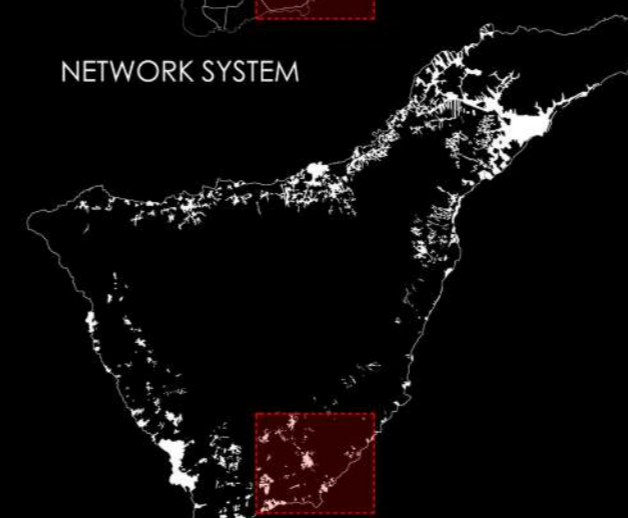
The Municipality of Tenerife



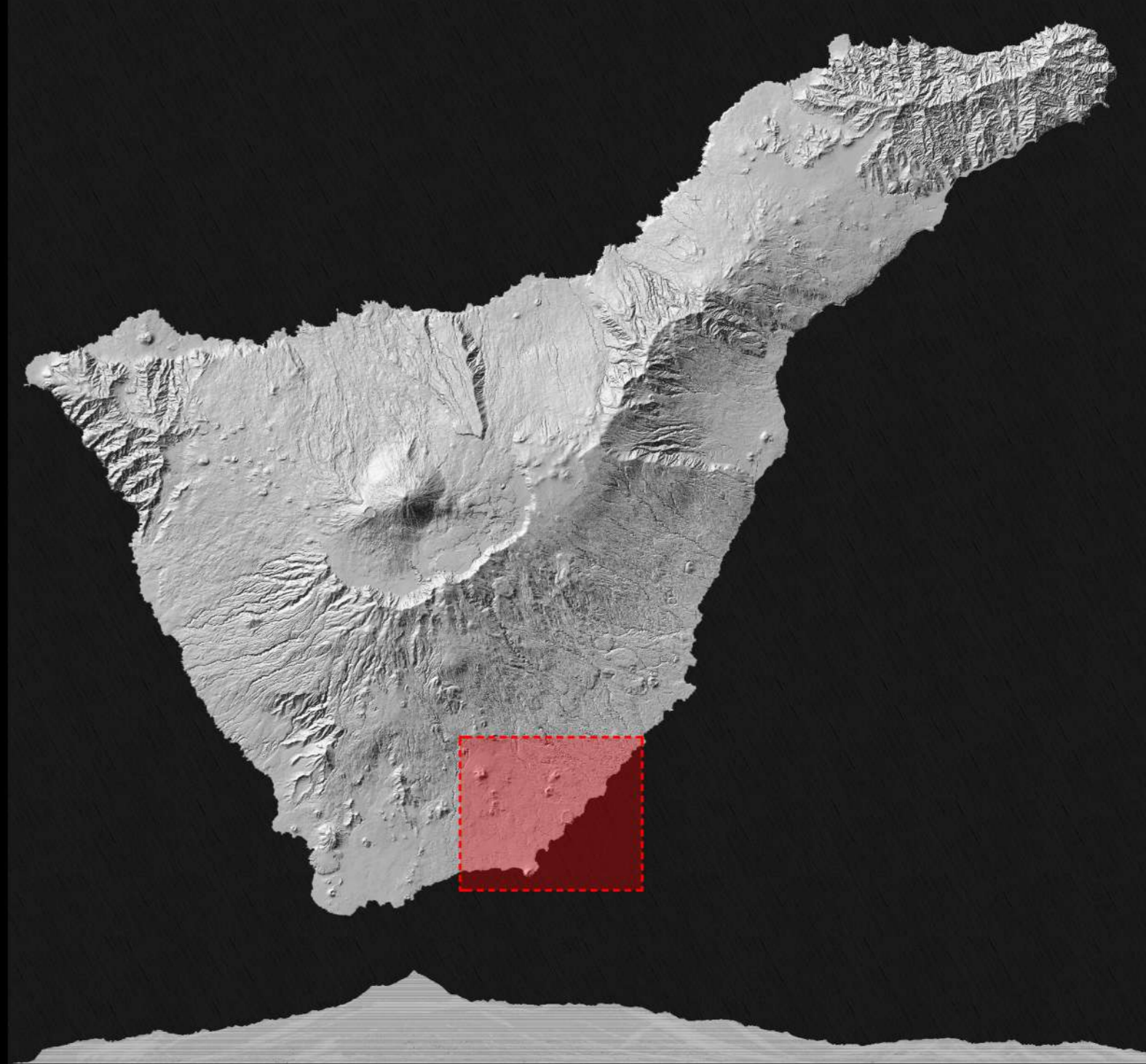
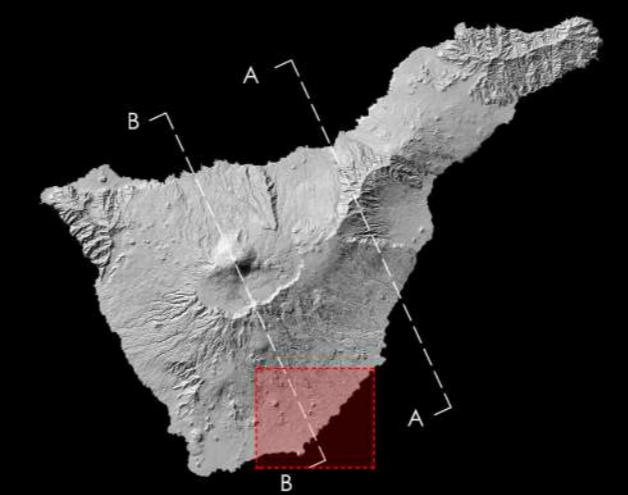
BARRANCO SYSTEM



NETWORK SYSTEM



DEVELOPMENT SYSTEM



ISLAND SOUTH ELEVATION



SECTION A-A

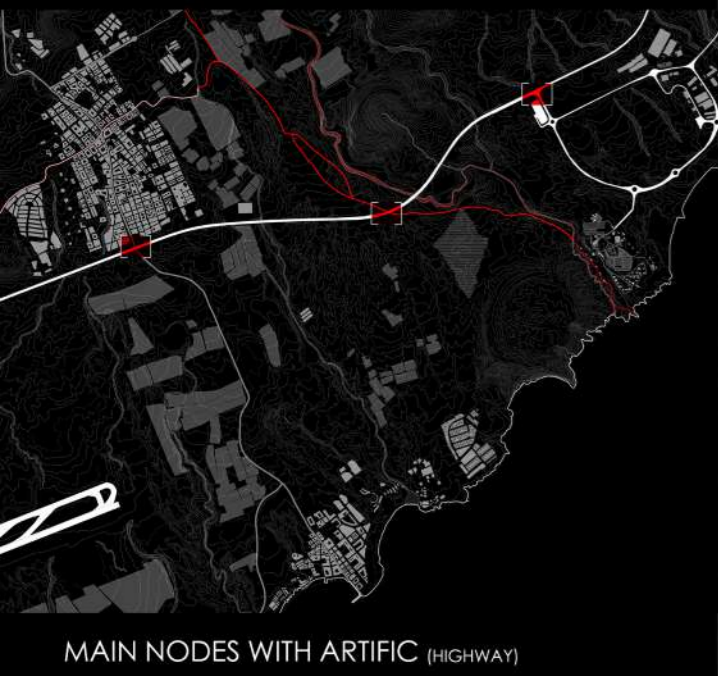


SECTION B-B

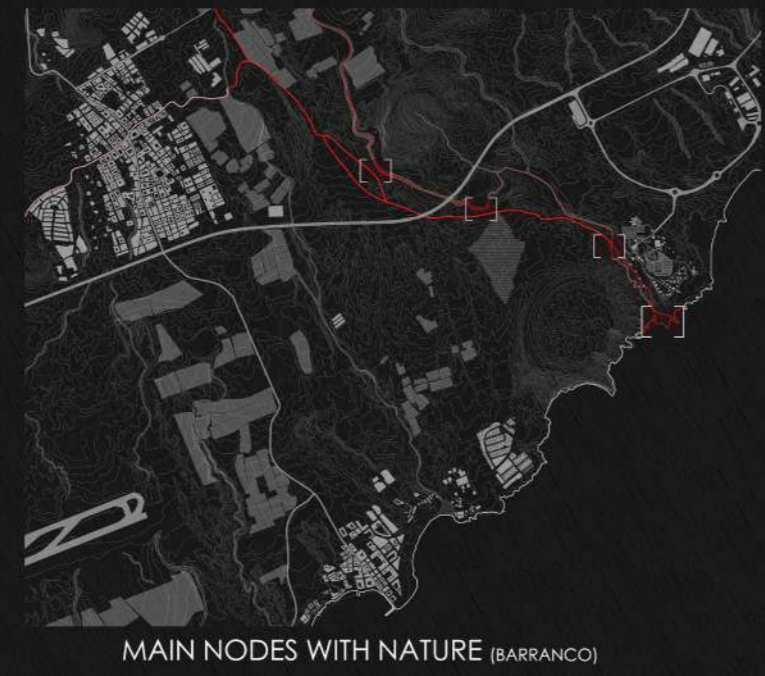




CAMINO DEL TRIGO



CAMINO + BARRANCO



MAIN NODES WITH NATURE (BARRANCO)



FUTURE DEVELOPMENT AREA



1 IGLESIA DE SAN ANTONIO DE PADUA (HISTORICAL)



2 CALLE DE IGLESIA (CULTURAL-HISTORIC)



3 CAMINO VISUAL OPEN HOIZON (NATURAL-ARTIFICIAL)



4 GREEN OPEN FIELDS (NATURAL-AGRICULTURAL)



5 GREEN HOUSES (NATURAL-AGRICULTURAL)



6 VOLCANIC FLAMES TEXTURE (NATURAL)



7 NATURAL ARCHAEOLOGY (CULTURAL-HISTORIC)



8 THE RED MOUNTAIN (NATURAL-MONUMENT)



9 SOLAR FIELDS (ARTIFICIAL-TECHNOLOGY)

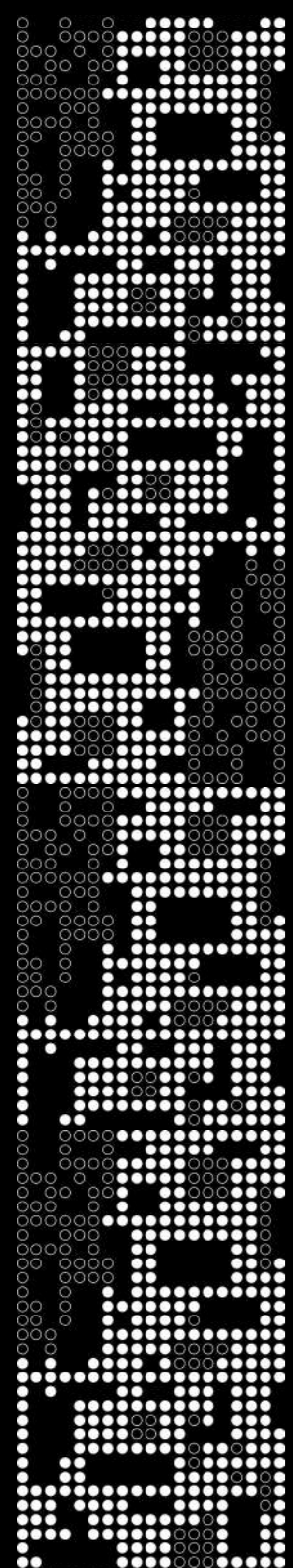


10 WIND TURBINES (ARTIFICIAL-TECHNOLOGY)



IL CAMINO BETWEEN NATURE AND ARTIFIC





# Architecture





## Rwanda Spiritual Complex.

Rukomo, **Rwanda**, African Territory.

Exact Location: Classified for security reason.

Compilation date: 2019

### Background:

Rukomo is a remote village situated in the upland of Rwanda. Rukomo is the inaccessible heart of an inaccessible continent. Here lives a community that has overcome moments of deep and great sorrow after the civil war between Tutsi and Hutu. The scars of such history still remind people of the indifference and apathy affecting the "First World". The people there live faraway from the hectic lifestyle of large areas of the world. These people look for spaces for their interiority and experience an intense return to spirituality. Rwanda Spiritual Complex is for each one of them. It is a place of peace and conciliation where to celebrate or meditate regardless of disagreements and differences. It will be a place where to be united in the longing for eternity. It is a symbol of global solidarity and cooperation..

### Scope Of Services:

- Concept Design Production.
- Architectural Design Production.
- Architectural interior design Production.
- Natural light design concept.
- Production of Structure Design.

### Concept:

The architectural proposal is reflecting three of the main influential elements guiding contemporary architecture in Rwanda the first is landscape dominated by the organic forms of hills and mountains besides the powerful existence of trees, flora and fauna. The second is the traditional architecture particularly the form of the traditional huts, which is dominating several architectural proposals.

Finally the proposal was influenced by the Rwandan art specially the Imigongo. It is designed with spiral and geometric colourful patterns reflecting the rural nature of the area. After further exploration for the pattern, we found out that it is composing an infinite geometrical relation similar to that between man and god its mysteriously endless. The previous three influences have been narrating the new relation between architecture and landscape and between man and Divine in terms of masses and spatial organisation.

### Partner:

Prof. Doaa Salaheldin.

### Client:

YAC Academy, Bologna, Italy.





## Isoldana, Island 2,9.

The Pearl, **Qatar**, Asian Territory.

25°22'7"N 51°33'7"E

Compilation date: 2017

### Background:

In Al Dafna seaside district of the Qatari capital Doha located on the Persian Gulf, the luxurious Isoldana project is placed and constructed as a revolutionary innovative artificial island. Atrio team was selected by very prestigious clients to provide a very unique design and inventive services.

### Scope Of Services:

- Architecture Design Review.
- MEP Space Planning.
- Production of Complete Electrical Design.
- Production of Complete ELV Design.
- Production of HVAC Design.
- Production of Drainage and Plumbing Design.
- Production of FLS Design.
- Production of Infrastructure Design of the Villas Utilities.
- Production of Structure Design.

Client:







## Various Private Luxury Villas.

Villas Num.: BVN 11, BVN12, BVN 15, BVN 54, BVS 54, FF 19, LPC 19, LPC 33, LPC 35, LPC 46, LPE 11, LPW 19.

Doha, Qatar, Asian Territory.

25°22'7"N 51°33'7"E

Compilation date: 2012-2018

### Background:

The result of our collaboration with Shelter Construction Group is well perceived in our work with them in various residential villas in the Middle East area. In these villas we present a clean geometric volumes modulated by the organization of the building components, the views to the outside, and the main circulation axis, taking into consideration the cultural architectural essence that is evident in the internal courtyards, small fountains and water landscape. Our MEP service is enhancing the design can fit and deal with the hot weather adding to the exterior and interior lighting design.

### Scope Of Services:

- Architecture Design Review.
- MEP Space Planning.
- Production of Complete Electrical Design.
- Production of Complete ELV Design.
- Production of HVAC Design.
- Production of Drainage and Plumbing Design.
- Production of FLS Design.
- Production of Infrastructure Design of the Villas Utilities.
- Production of Structure Design.

Client:





## Highness Sheikh Ahmed Private Luxurious Palace.

Wukair, **Qatar**, Asian Territory.

25°22'7"N 51°33'7"E

Compilation date: 2020-2021

### Background:

The result of our collaboration with Shelter Construction Group is well perceived in our work with them in various residential projects in the Middle East area. These are large scale residential projects for very prestigious clients. In these projects we present a clean geometric volume modulated by the organisation of the building components, the views to the outside, and the main circulation axis, taking into consideration the cultural architectural essence that is evident in the internal courtyards, small fountains and water landscape. Our MEP service is enhancing the design can fit and deal with the hot weather adding to the exterior and interior lighting design.

### Scope Of Services:

- Architecture Design Review.
- MEP Space Planning.
- Production of Complete Electrical Design.
- Production of Complete ELV Design.
- Production of HVAC Design.
- Production of Drainage and Plumbing Design.
- Production of FLS Design.
- Production of Infrastructure Design of the Villas Utilities.
- Production of Structure Design.

Client:





## Proposed Nursery School.

Mansoura - Cairo Rd, **Egypt**, African Territory.

Compilation date: 2019

### Background:

The vision of building a nursery school in that site was presented to the owners based on the location, birth rate and the Egyptian government plan to start a new Japanese Egyptian school 150 meters away from the project site. The Nursery school will provide new features to the children between 2 to 5 years old that will keep up with the Japanese quality as a part of the JICA agreements between the two countries.

The architectural design was made

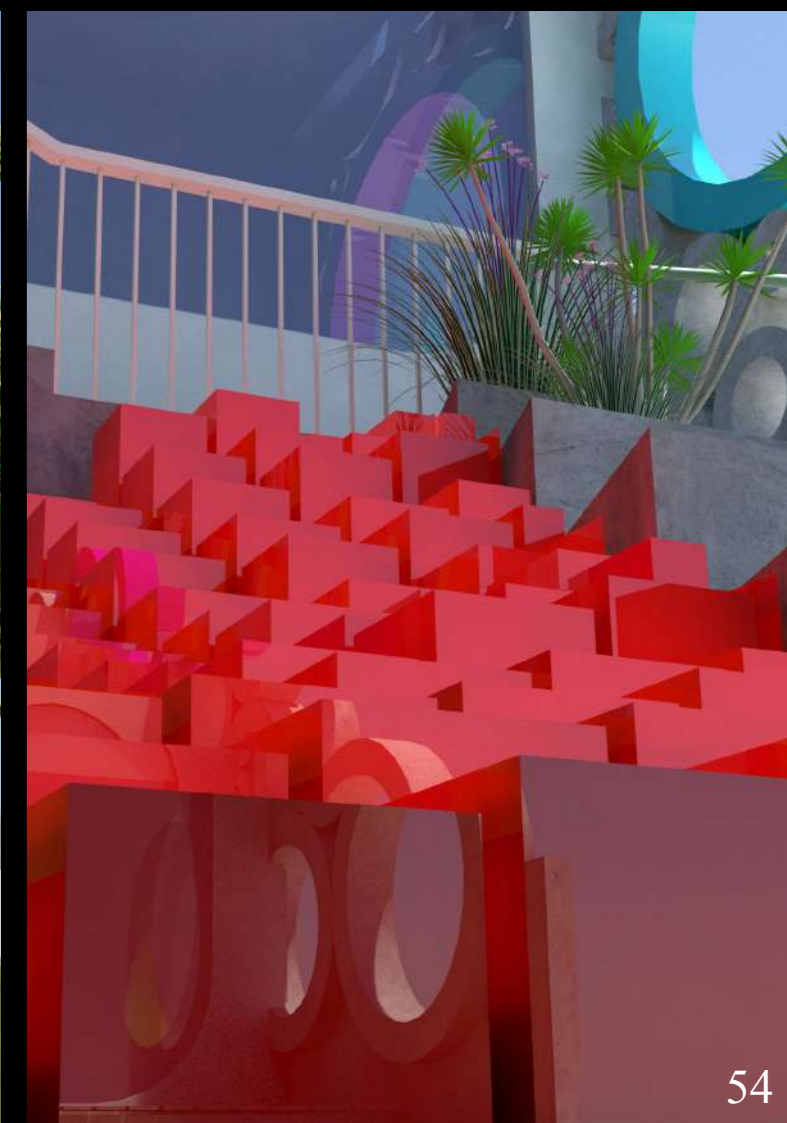
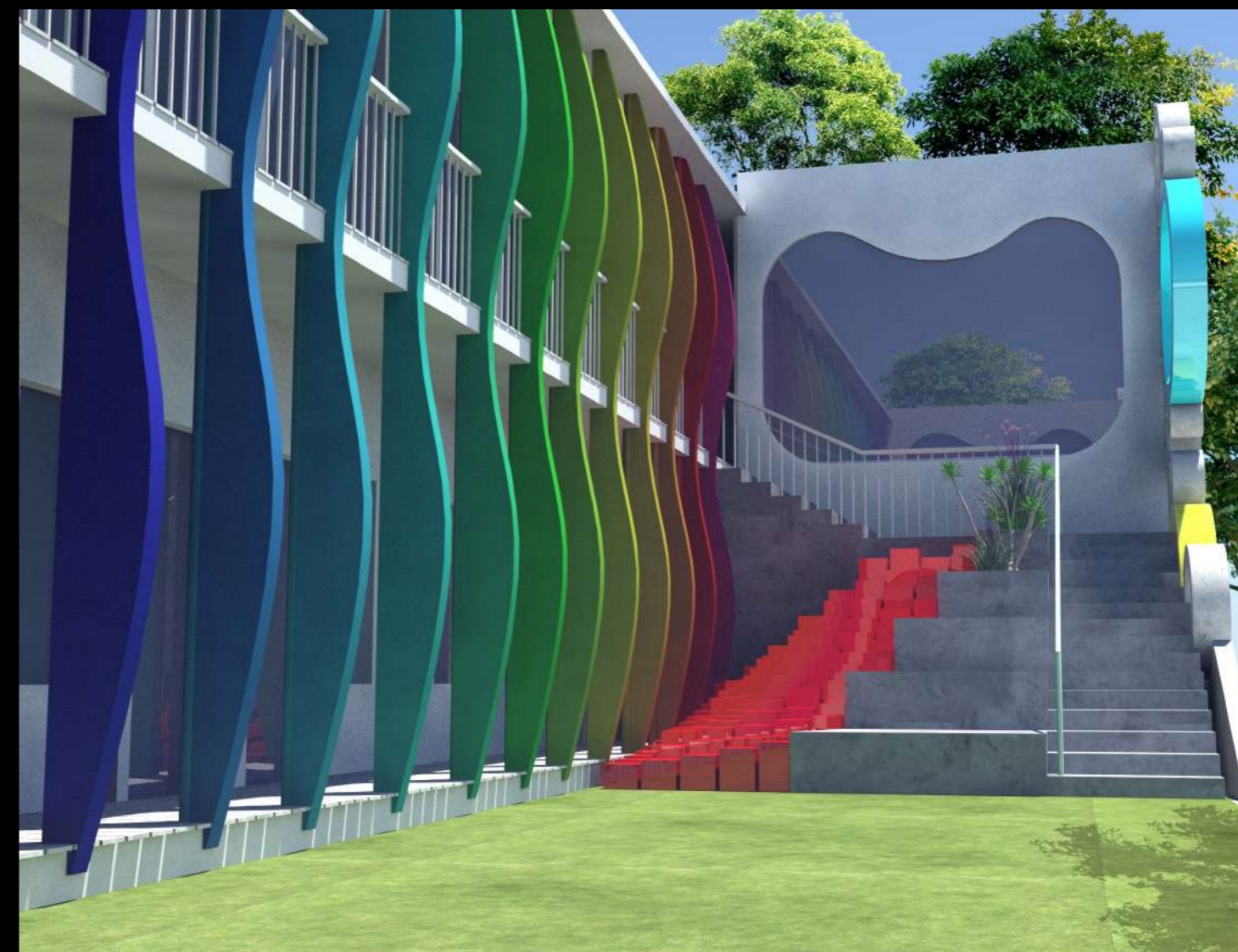
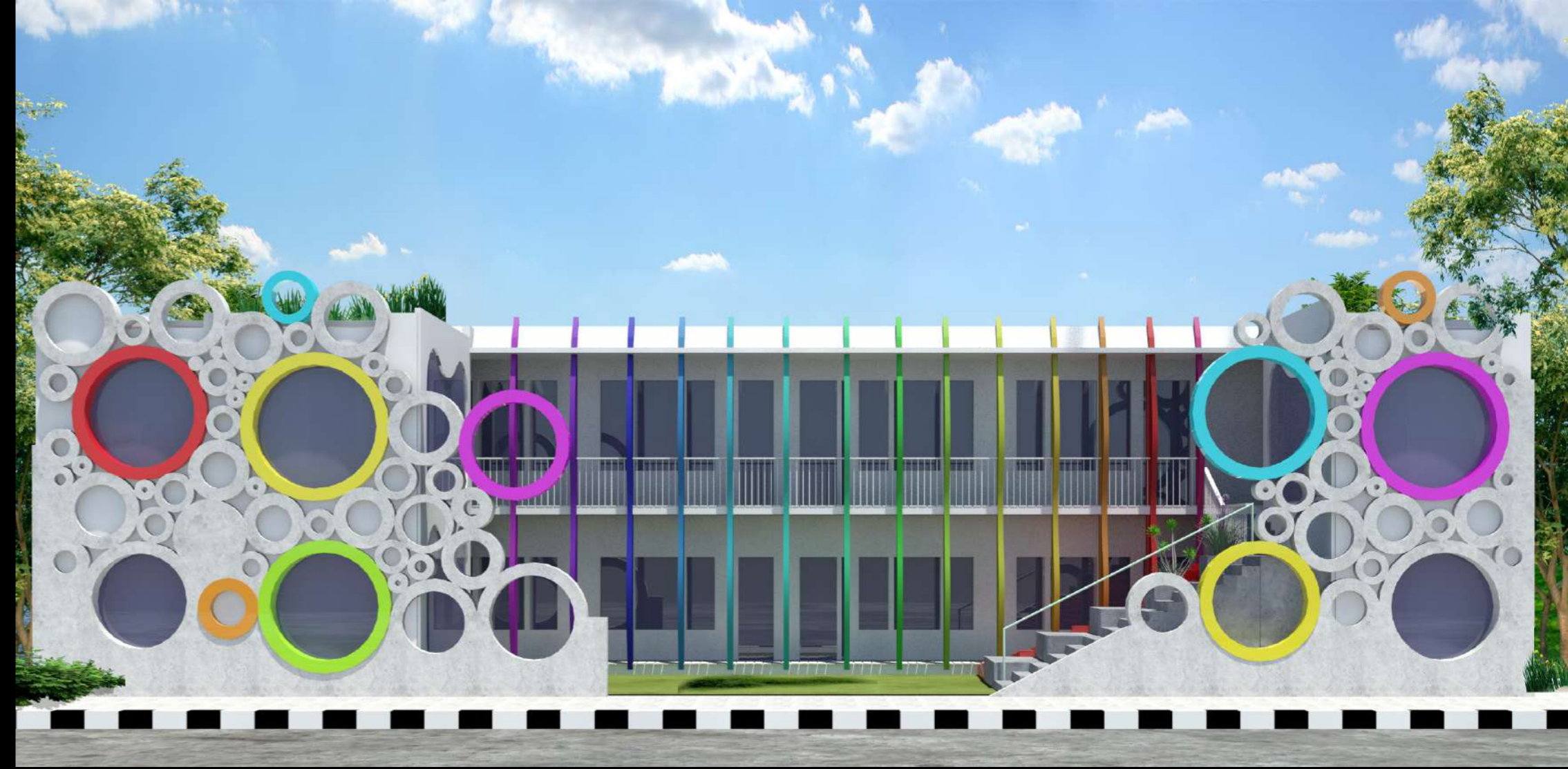
The spatial composition design is flexible enough to give the opportunity to children to play and learn in different open or closed spaces. The colourful permeative shapes target helping child's emotional, social and personal growth and development. The different scale common areas aim to increase the interaction and exposure with children of same age group where teachers can help them to enhance their communication skills..

### Scope Of Services:

- Concept Design Production.
- Architectural Design Production.
- Architectural interior design Production.
- Production of Complete Electrical Design.
- Production of details Design.
- Building Information Model (BIM) production.
- Production of HVAC Design.
- Production of Drainage and Plumbing Design.
- Production of FLS Design.
- Production of Structure Design.
- Cost Estimation.
- Time Estimation.

### Client:

Egyptian Educational Building Authority.





## Spandauer Wahrzeichen Theater.

Berlin, **Germany**, European Territory.

28°16'7"N , 16°36'20"W

Compilation date: 2014

### Background:

The theatre is located in a very strategic site. It is positioned on the top of Berlin Wall traces, along berlin-spandau ship canal and almost 1500 meters away from Berlin Central Station - Hauptbahnhof. The theatre design is vertical landmark the ships in the canal going towards the centre.

### Scope Of Services:

- Allocation analysis.
- Concept Design Production.
- Architectural Design Production.
- Architectural interior design Production.
- Production of Structural Design.
- Production of details Design.
- Urban connections investigation.
- Master plan Design Production.
- Urban connections investigation.
- Production physical models.

### Design Concept:

The building is giving a new concept of multifunctional entertainment hub to Berlin habitants. Apart from the open piazza and the waterfront in front of the building, it includes another typology of a lift up covered open square. The project also includes different exhibition halls and hanged gardens that act as a vertical forest.

Moreover, the theatre stage is in the 6th floor and the entire hall is extending to the 8th floor. In this way the audience are having the opportunity to see the canal in the background of the stage, providing another dimension to the act.

### Partner:

Politecnico di Milano



### Client:

Municipality of Berlin





## Piacenza Social Housing.

Piacenza, Emilia-Romagna, **Italy**, European Territory.

45°2'52"N 9°42'2"E

Compilation date: 2014

### Background:

In a North-Italian city where the economic rate is growing rapidly, Piacenza social housing project is located in an old abundant railway station warehouse. The project was designed and located in the large open yard to transform the district and establish new residential function that can transform the area.

The location is very close to the city center and the mail square (Piazza Cavalli).

The project is consisting of three buildings blocks with different heights. Each building includes different types of unites (Studio, Monolocale, Bilocale, appartamenti) adding to the underground parking area and the commercial shops positioned in the soft edges..

### Scope Of Services:

- Concept Design Production.
- Architectural Design Production.
- Architectural interior design Production.
- Production of Structural Design.
- Production of details Design.
- Building Information Model (BIM) production.
- Energy Simulations.
- Cost Estimation.
- Time Estimation.
- Production physical models.
- Urban connections investigation.
- Master plan Design Production.

### Partner:

Politecnico di Milano



### Client:

Comune di Piacenza













## Nature and Technology research centre .

Tenerife Island, **Spain**, African Territory.

28°16'7"N , 16°36'20"W

Compilation date: 2015

### Background:

The vision of Tenerife governance was to start the south zone of the island with a landmark building which can push the development wheel and encourage investors to take action in the evolution of that part. The research center building is the starting point. The site is located in a very critical spot aside the Barranco, volcanic mountain from the west side and the technological farm on the east side. The building architectural design is trying to provide a new vertical architectural landscape concept by hosting an upright park and diffused urban spaces acting as spread voids in the massive solid building..

### Scope Of Services:

- Concept Design Production.
- Master plan Design Production.
- Architectural Design Production.
- Architectural interior design Production.
- Production of Structural Design.
- Production of new vertical park system vision.
- Production physical models.

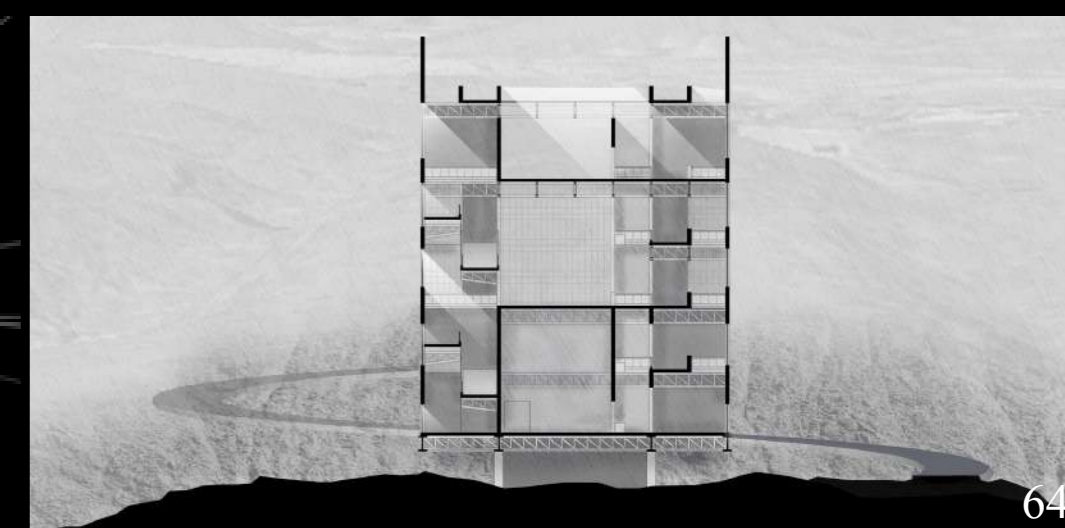
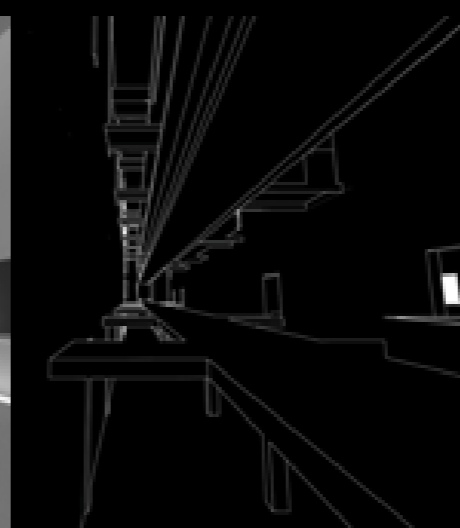
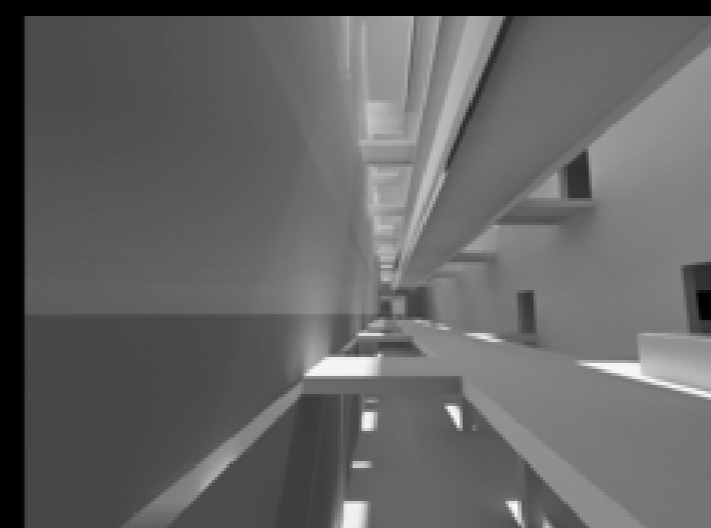
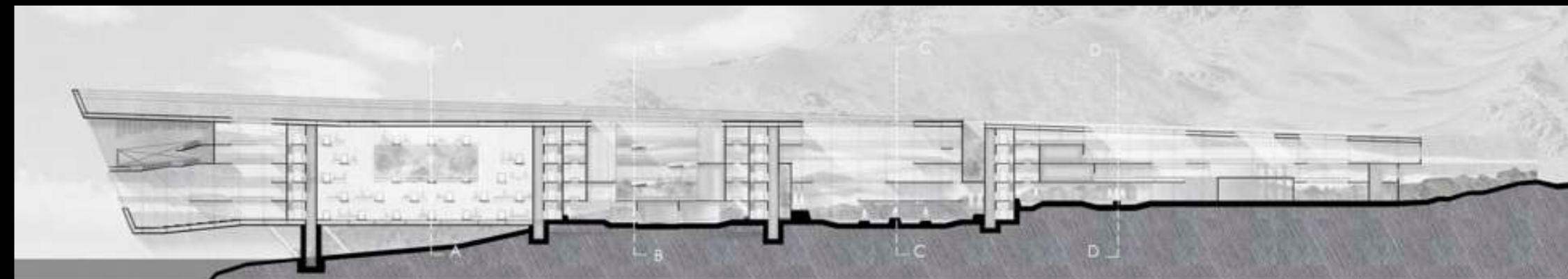
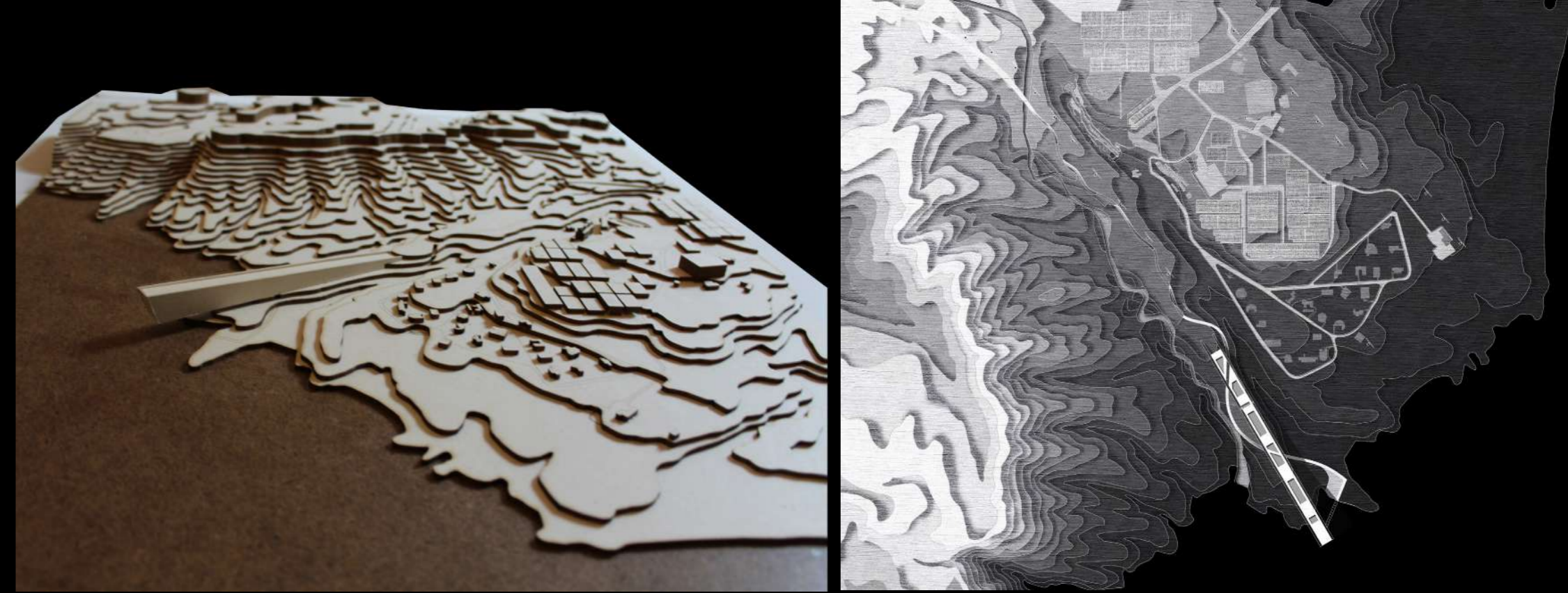
### Partner:

Politecnico di Milano



### Client:

The Municipality of Tenerife





## Mixed use, Office Building and Residential Tower.

Cairo, **Egypt**, African Territory.

30°2'N , 31°14'E

Compilation date: 2013

### Background:

A mixed use tower that is located in the middle of the Egyptian Delta. The tower is containing several functions divided in different floors such as a bank, a hospital, a 3 floors co-working spaces, clinics and three different typologies of residential apartments distributed in 5 floors. The project is a true complex of spatial composition.

### Scope Of Services:

- Concept Design Production.
- Master plan Design Production.
- Architectural Design Production.
- Architectural interior design Production.
- Production of Structural Design.
- Production of new vertical park system vision.
- Production physical models.

### Client:

Abou Elhoul Co., Ltd.





## Zamzam Royal Hotel Tower.

Riyadh, Saudi Arabia, Asian Territory.  
24°38'N , 46°43'E

Compilation date: 2012

### Background:

The Zamzam hotel is located in the heart of Riyadh city in Saudi Arabia. The project contains several mixed use functions inside such as commercial center, central garage, private swimming pools besides the hotel rooms and the central basement garage. Adding to that, there is a heliport on the top of the building attached to the royal suites.

### Scope Of Services:

- Concept Design Production.
- Master plan Design Production.
- Architectural Design Production.
- Architectural interior design Production.
- Production of Structural Design.
- Production of new vertical park system vision.
- Production physical models.

### Partner:

Abdulrazak  
Hakeem Consulting  
Engineering

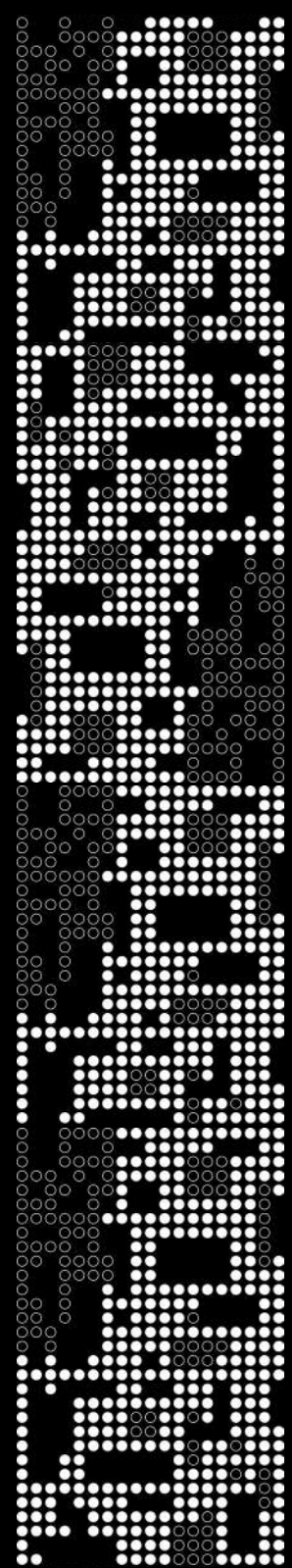


### Client:

The Executive  
Committee for the  
Development of  
the Central Region,  
Saudi Arabia







## Interior Design





## Spandauer Wahrzeichen Theater.

Berlin, **Germany**, European Territory.

28°16'7"N , 16°36'20"W

Compilation date: 2020

### Background:

The theatre is located in a very strategic site. It is positioned on the top of Berlin Wall traces, along berlin-spandau ship canal and almost 1500 meters away from Berlin Central Station - Hauptbahnhof. The theatre design is vertical landmark the ships in the canal going towards the centre.

### Scope Of Services:

- Allocation analysis.
- Concept Design Production.
- Architectural Design Production.
- Architectural interior design Production.
- Production of Structural Design.
- Production of details Design.
- Urban connections investigation.
- Master plan Design Production.
- Urban connections investigation.
- Production physical models.

### Design Concept:

The building is giving a new concept of multifunctional entertainment hub to Berlin habitants. Apart from the open piazza and the waterfront in front of the building, it includes another typology of a lift up covered open square. The project also includes different exhibition halls and hanged gardens that act as a vertical forest.

Moreover, the theatre stage is in the 6th floor and the entire hall is extending to the 8th floor. In this way the audience are having the opportunity to see the canal in the background of the stage, providing another dimension to the act.

### Partner:

Politecnico di Milano



### Client:

Municipality of Berlin













## Concept for Commercial Tower Lobby.

Doha, Qatar, Asian Territory.

25°22'7"N 51°33'7"E

Compilation date: --

### Background:

A conceptual vision to a lobby area in one of the commercial towers located in Al-Dafnah CBD area in the Qatari capital Doha. The design is done using the deconstruction school of architecture inspired by the Arab sand dunes in the Qatari desert with the wind flow, stitching the lobby void's spatial composition.

### Scope Of Services:

- Space Design.
- Concept Design Production.
- Architectural Design Production.
- Interior design Production.
- Production of Structural Design.
- Production of details Design.

### Partner:

SQ-Cyprus

### Client:

Classified







## Hala Yumma Restaurant.

The Pearl, **Qatar**, Asian Territory.

25°22'7"N 51°33'7"E

Compilation date: 2019

### Background:

In Al Dafna seaside district of the Qatari capital Doha located on the Persian Gulf, the luxurious Hala Yumma Resturant is placed and constructed in The Pearl artificial island. Atrio team was selected by very prestigious clients to provide a very unique design that reflects the Arab originality and Modernity.

### Scope Of Services:

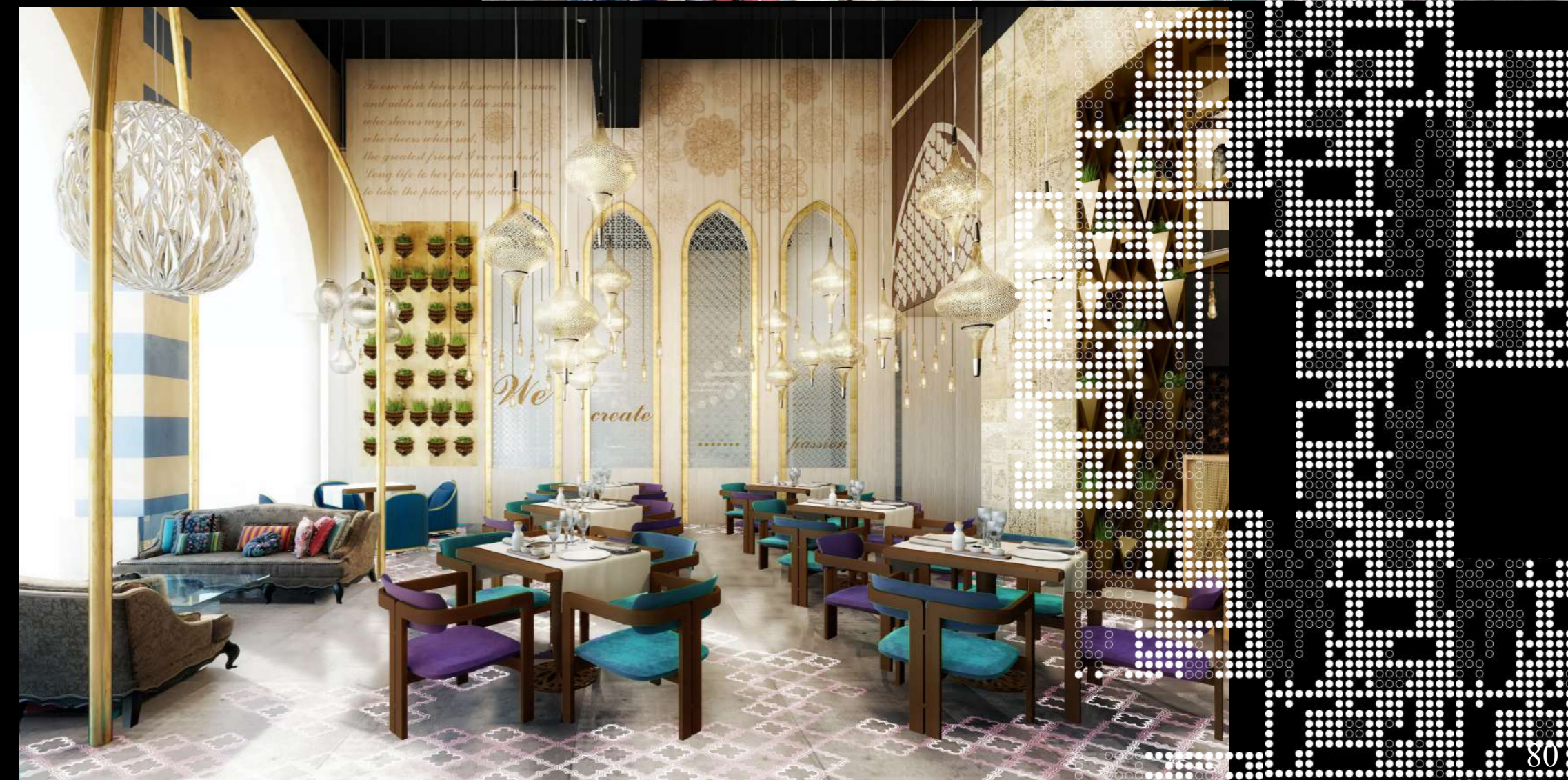
- Space Design.
- Concept Design Production.
- Architectural Design Production.
- Interior design Production.
- Production of Structural Design.
- Production of details Design.
- MEP Production.

### Partner:

SQ-Cyprus

### Client:

Hala Yumma.





## Private Royal Spa.

Dubai, **United Arab Emirates**, Asian Territory.

25°15'47"N 55°17'50"E

Compilation date: 2017

### Background:

In Dubai, the home of luxury, Atrio team was selected by very prestigious clients to provide a very unique and fancy design to a private spa. The project contains several functional areas to provide the maximum possible comfort to the users. It includes message areas, Moroccan Hammam, barber saloon, swimming pools, sauna and a small Majlis .

### Scope Of Services:

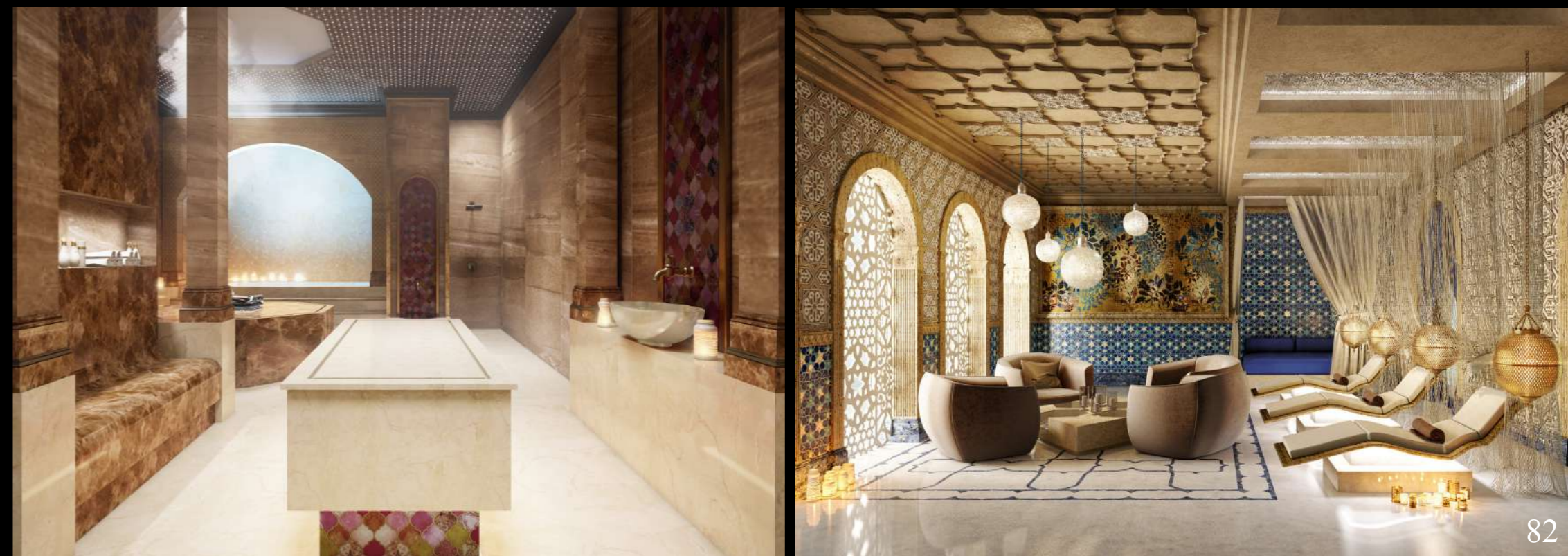
- Space Design.
- Concept Design Production.
- Architectural Design Production.
- Interior design Production.
- Production of Structural Design.
- Production of details Design.
- MEP Production.

### Partner:

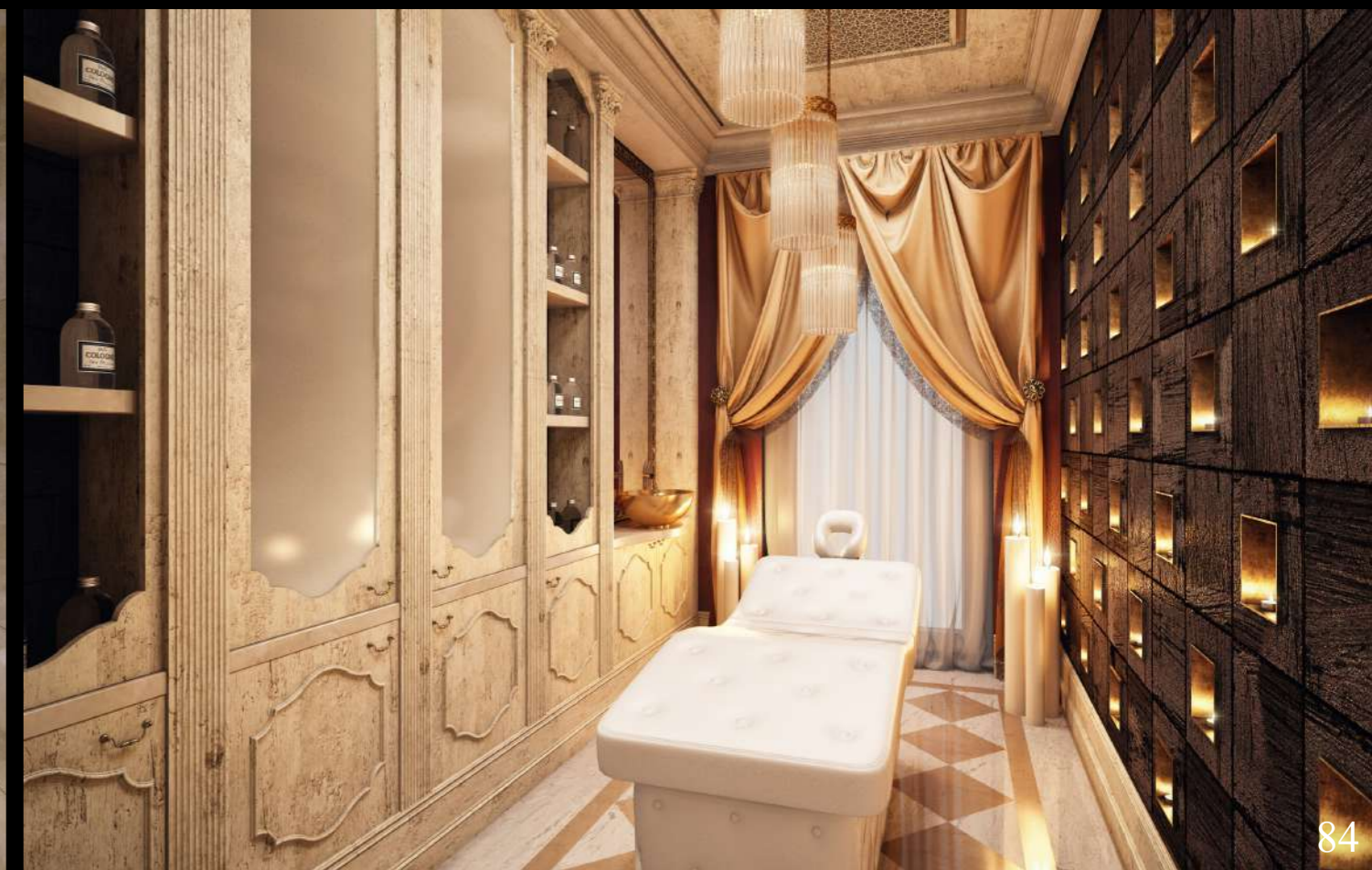
SQ-Cyprus

### Client:

Classified









## Ancona Showroom.

Dubai, **United Arab Emirates**, Asian Territory.

25°15'47"N 55°17'50"E

Compilation date: 2019

### Background:

In Dubai, one of the major business destinations in the world, locates our project Ancona Showroom. The interior design was done in a modern way using the products and technologies from their own products. The project is counted as an open everyday exhibition for their products. On the other hand, the Interior design of the space is well oriented to have a great view to the city.

### Scope Of Services:

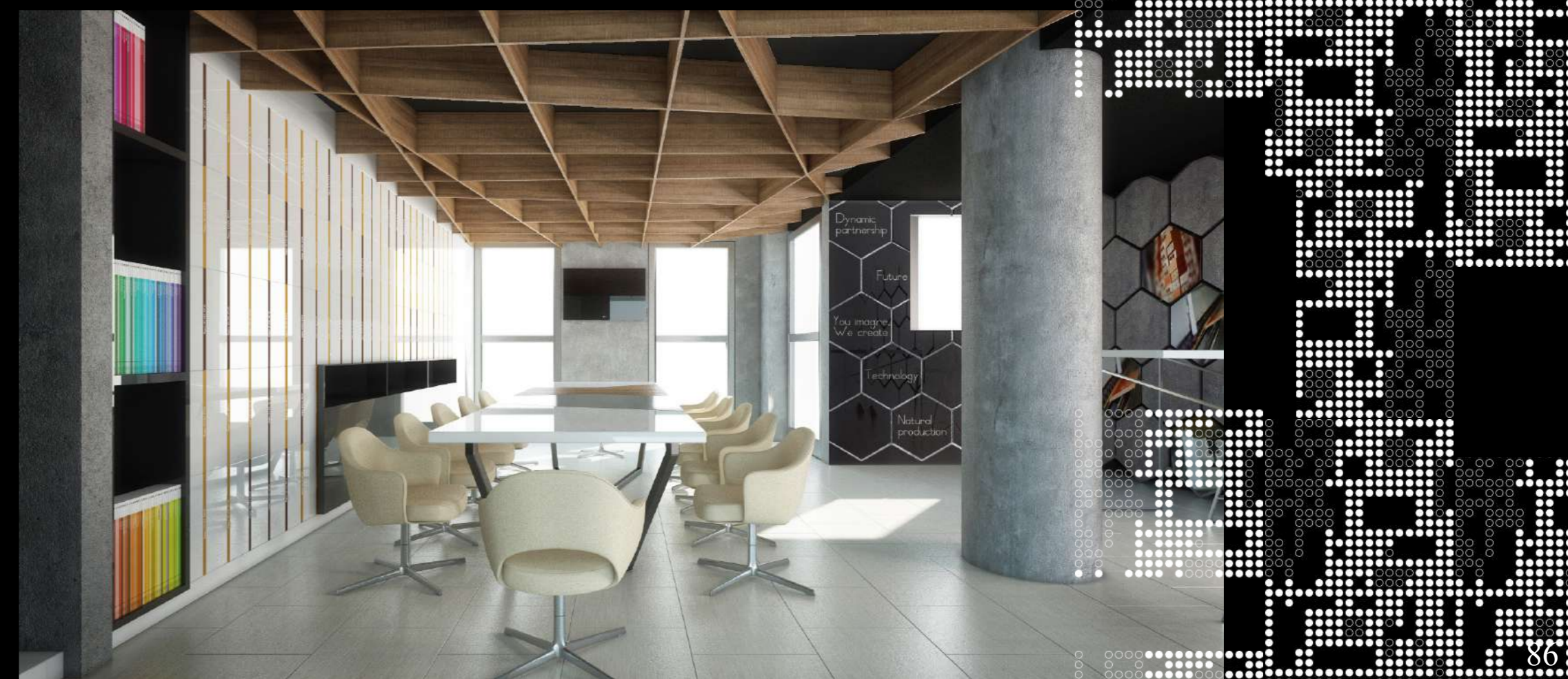
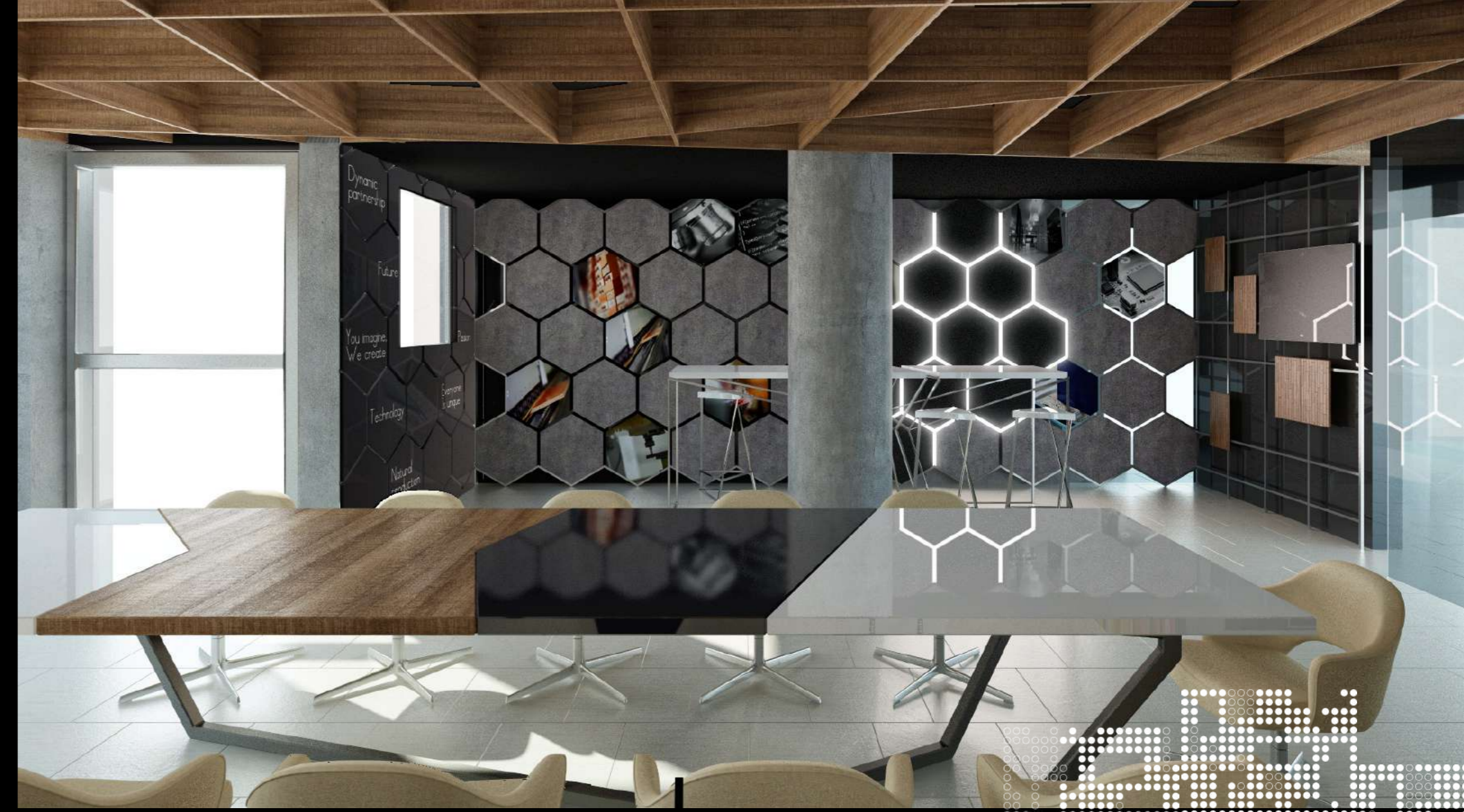
- Space Design.
- Concept Design Production.
- Architectural Design Production.
- Interior design Production.
- Production of Structural Design.
- Production of details Design.
- MEP Production.

### Partner:

SQ-Cyprus

### Client:

Classified





## Faisal Private Villa.

Abu Dhabi, **United Arab Emirates**, Asian Territory.

24°28'N 54°22'E

Compilation date: 2019

### Background:

In Abu Dhabi, the second biggest city in UAE is where the mega residential luxurious Faisal Villa. The owner asked for an interior design that expose richness and luxury. That can be seen in the used materials, lightning systems, furniture and golden colors.

Atrio team was selected by the owner to provide a very unique design that reflects the multi-cultural ornaments, luxury and Modernity.

### Scope Of Services:

- Space Design.
- Concept Design Production.
- Architectural Design Production.
- Interior design Production.
- Production of Structural Design.
- Production of details Design.

### Partner:

SQ-Cyprus

### Client:

Classified





## Biotec Working Space.

Dubai, **United Arab Emirates**, Asian Territory.

25°15'47"N 55°17'50"E

Compilation date: 2019

### Background:

In the central business district of Dubai, Biotec working space is located. Our mission was to come up with a simple minimal design that is easy to execute in a very short time frame. The pure volumes and the open plan gave the advantage of achieving an easy circulation for the space users.

### Scope Of Services:

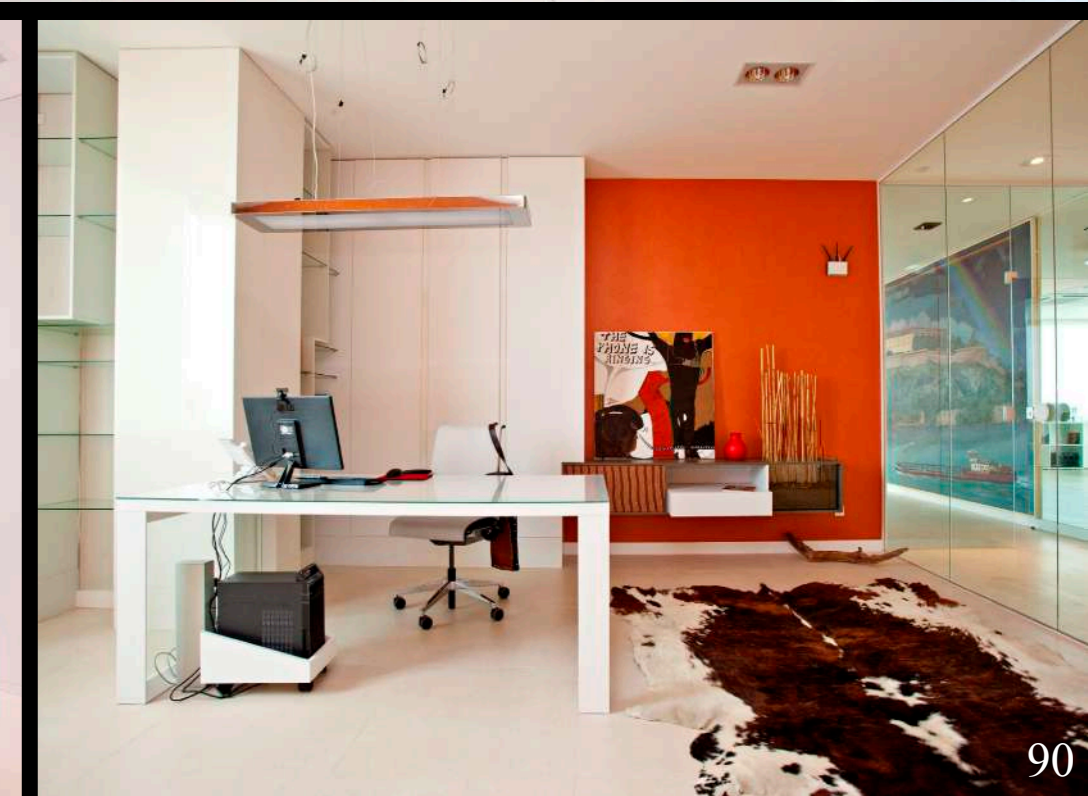
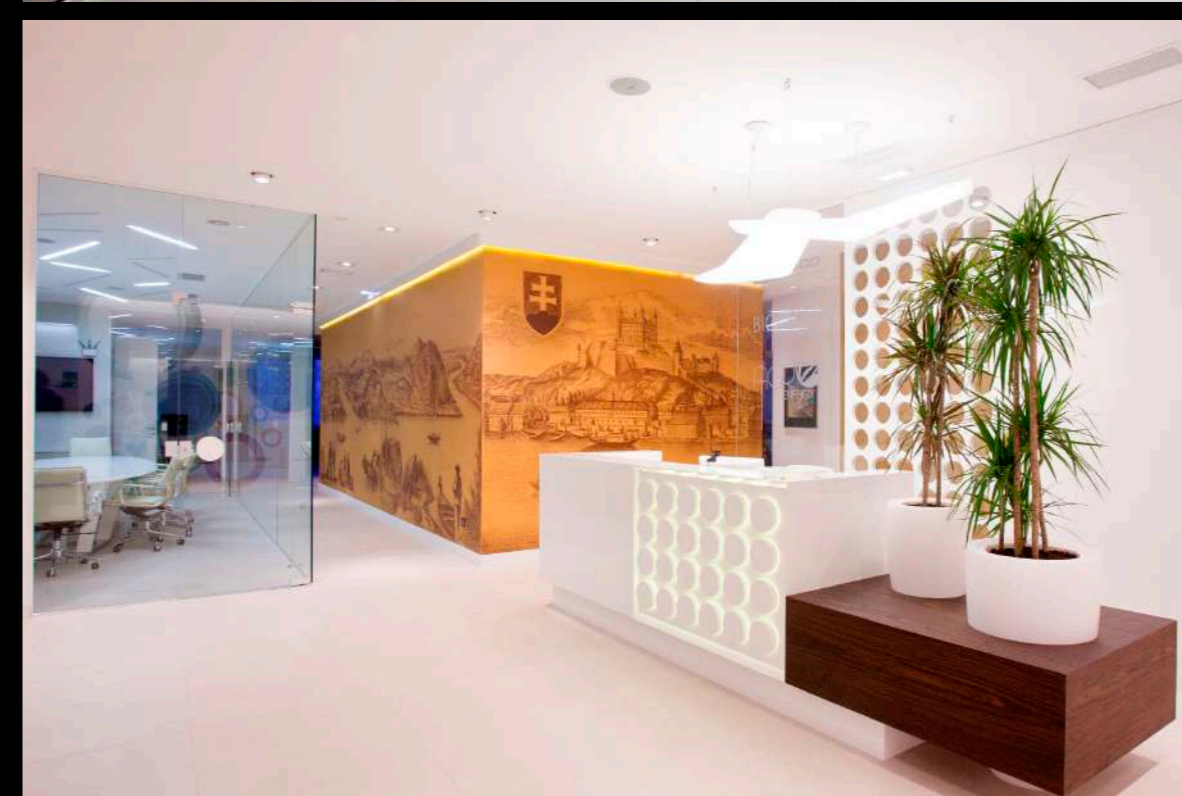
- Space Design.
- Concept Design Production.
- Architectural Design Production.
- Interior design Production.
- Production of Structural Design.
- Production of details Design.
- MEP Production.

### Partner:

SQ-Cyprus

### Client:

Biotec Ltd.







## Archeress Enterprises Trading Headquarter.

Dubai, **United Arab Emirates**, Asian Territory.

25°15'47"N 55°17'50"E

Compilation date: 2018

### Background:

In Dubai, in one of the existed unites, our mission was to re-modify the internal spaces to fit out the new company spatial needs. Our scope was to sustain some of the old decorations, liberate the floor plan and reuse it through our proposed vision that match the client demands.

### Scope Of Services:

- Space Design.
- Concept Design Production.
- Architectural Design Production.
- Interior design Production.
- Production of Structural Design.
- Production of details Design.
- MEP Production.

### Partner:

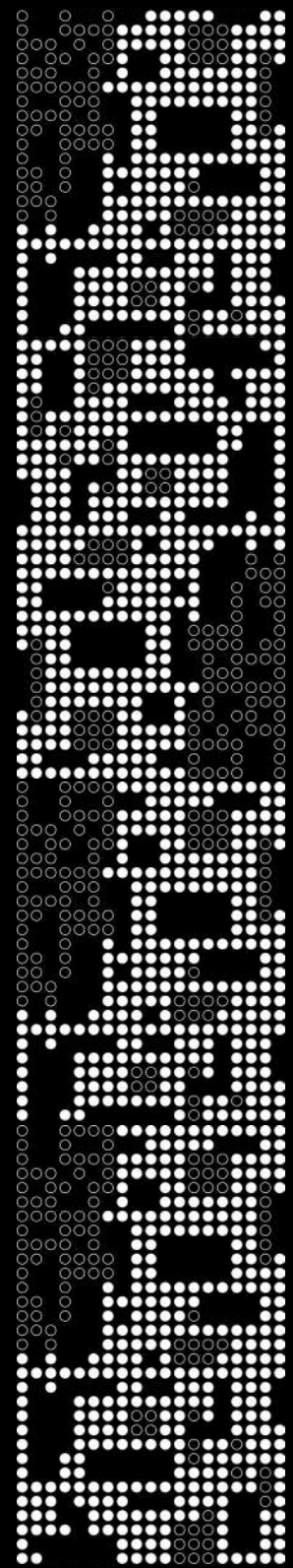
SQ-Cyprus

### Client:

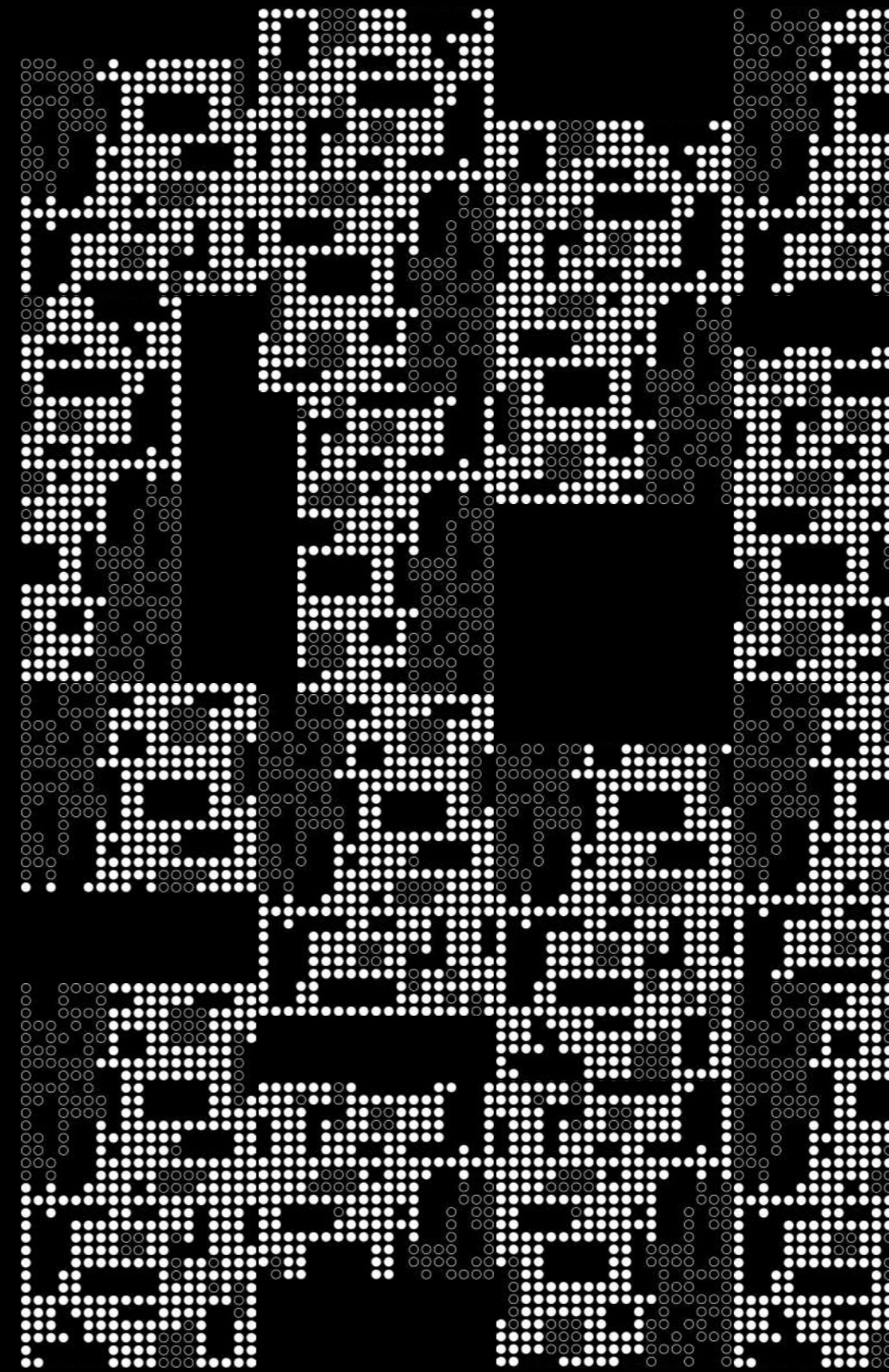
Archeress  
Enterprises Trading







## Data Centers







## Data Centre.

Doha, Qatar, Asian Territory.

Compilation date: 2016

### Background:

ATRIO is a certified Uptime Institute ATD ( Accredited Tier Designer ) through Ahmed Hossam - ATD 2498 .

### Scope Of Services:

ATRIO has established a special business unit for the Data Center Projects capable of the below :

A- Data Center Infrastructure and Building Services Design :

- 1- Data Center Site Selection.
- 2- Data center Space Planning.
- 3- Architecture Design.
- 4- Structure Design.
- 5- Electrical Systems Design.
- 6- Mechanical Systems Design.
- 7- Security Systems Design.
- 8- Telecommunications Systems Design.
- 9- Fire Protection Systems Design.
- 10- Ancillary Systems Design.

B - Data Center Certifications:

ATRIO as DC Specialist is able to liaising with the Uptime institute to obtain the design / site certification .

C - Data Center Cost Management:

ATRIO through multiple advanced seminars and implemented projects ( through its Founder ) can implement a Cost management plan from the site selection extended to the DC Operations expenses .

### Relative Authorities / Agencies Membership :

- 1- Uptime institute ( the Data center Authority )- ATD Certified .
- 2- BICSI (DCDC Certification is in Progress )

### Sample Of Executed Projects by ATRIO:

- QNB Data Center Tier II.

The project was done under Client:  
the umbrella of:







## Data Centre.

Doha, **Qatar**, Asian Territory.

Compilation date: 2016

### Background:

ATRIO is a certified Uptime Institute ATD ( Accredited Tier Designer ) through Ahmed Hossam - ATD 2498 .



To Whom It May Concern

**Subject: Qatar National Bank Data Center Accomplishment**

This is to confirm and acknowledge the contribution of Eng. Ahmed Hossam Darwish in the Design and Delivery of Qatar National Bank Data Center which has been delivered on 2016 and successfully certified by the Uptime Institute.

During the Project, Ahmed has showed up the Knowledge and awareness of Uptime Institute / Tier Standards.

Furthermore, he managed to supervise the integration of the Tier Standard requirements and the Local Authority requirements until we got Certified Design and Site.

Sincerely,

For Qatar National Bank,

Najla AlMutawa  
AGM- Local project Management & Engineering



General Services & Special Project



## Contact us:

Head Office:

Viale Abruzzi, 94, Milano MI (Italy).

Postal Code: 20131

T: +39 388 4060 496

Middle East Branch:

Villa 5, Al Narges 3, New Cairo, (Egypt).

Postal Code: 11845

T: +20 100 9001220

[info@atriomilano.com](mailto:info@atriomilano.com)



